

# Identify Users Logged into OP

Last Modified on 09/24/2021 1:43 pm EDT

Version 14.19

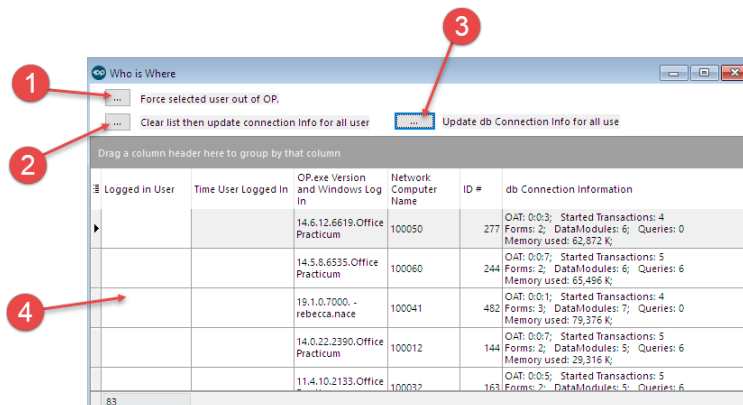


This window map article points out some of the important aspects of the window you're working with in OP but is not intended to be instructional. To learn about topics related to using this window, see the **Related Articles** section at the bottom of this page.

## About Who is Where

**Path: Admin tab > Logged in Users**

The Who is Where window displays who is logged into OP and allows you to force users out of OP, if necessary.



## Who is Where Map

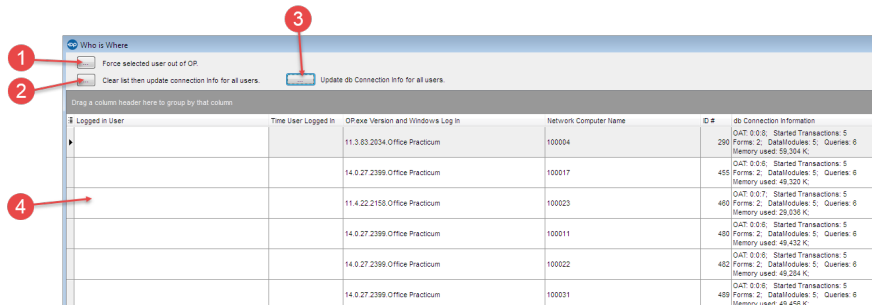
Number	Section	Description
1	Force button	The Force button forces selected users out of OP.
2	Clear List button	The Clear List button clears the list then updates the connection information for all users in OP.
3	Update Database button	The Update Database button updates the database connection information for all users.
4	Login grid	The Login Grid displays the logged-in users in OP. It displays each user's login time, the version used, the network computer name, ID#, and database connection information.

Version 14.10

## About Who is Where

**Path: Log In/Out menu > Show Logged in Users**

The Who is Where window displays who is logged into OP and allows you to force users out of OP, if necessary.



## Who is Where Map

Number	Section	Description
1	Force button	The <b>Force</b> button forces selected users out of OP.
2	Clear List button	The <b>Clear List</b> button clears the list then updates the connection information for all users in OP.
3	Update Database button	The <b>Update Database</b> button updates the database connection information for all users.
4	Login grid	The Login Grid displays the logged in users in OP. It displays each user's log in time, the version used, the network computer name, ID#, and database connection information.