



### Important Content Update Message

We are currently updating the OP Help Center content for OP 20. We appreciate your patience as we continue to make these updates. To locate the version of your software, navigate to: **Help tab > About**

# Assigning Synonyms and Groups for Diagnosis Codes

Last Modified on 09/17/2020 3:58 pm EDT

Version 20.6

**Path: Billing tab > Diagnosis Codes (Reference Data)**

## Overview

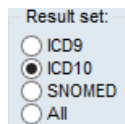
Synonyms are used to add additional phrasing for one Diagnosis Code. This makes it easier to find the code you are looking for while maintaining the official description for each word. Diagnostic Groups are used to group Diagnosis Codes by similar attributes like system or symptom. This makes it easier to find a code.

## Adding a Synonym

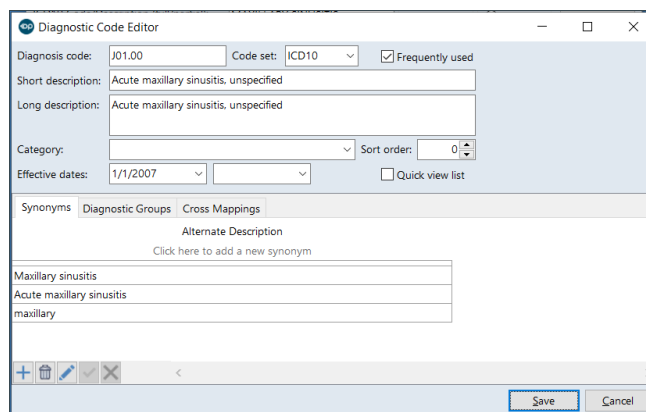


**Note:** When adding a synonym for an ICD10 code the synonym should be a reflection of the ICD10 code. ICD10 codes are more specific, therefore the synonym should match the specificity of the code. An example of a non-specific synonym would be Ear Pain for H66.41 Suppurative Otitis Media, unspecified, right ear.

1. Open the Diagnosis Code Management window, following the above path.
2. Select the **ICD10** radio button in the Result set section.



3. Click in the **ICD10 Code/Description** field, search by entering a code or description the pressing the Enter key or Search button.
4. Highlight the diagnosis code and click the **Edit** button.
5. From the *Synonyms* tab, click the **Add** button.

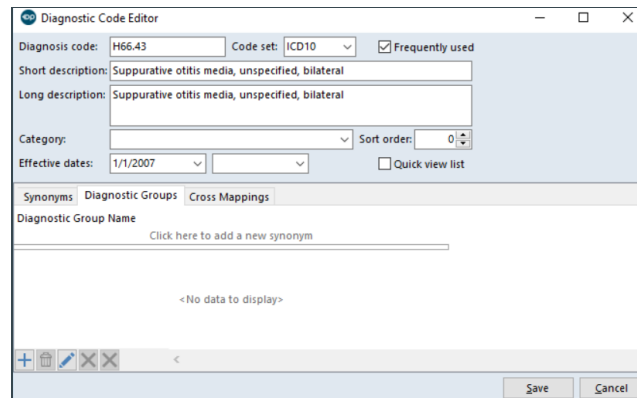


6. Once the synonym is added, click the **Save** button. Repeat to add additional synonyms.

7. To save all information, click the **Save** button.

## Adding a Diagnostic Group

1. Open the Diagnosis Code Management Window.
2. Select the **ICD10** radio button in the Result set section.
3. Click in to the **ICD10 Code/Description** field, search by entering a code or description the pressing the Enter key or Search button.
4. Highlight the diagnosis code and click the **Edit** button.
5. From the *Diagnostic Groups* tab, click the **Add** button.



6. Once the Diagnostic Group is added, click the **Save** button. Repeat to add additional Diagnostic groups.
7. To save all information, click the **Save** button.