

Enter Vital Signs and Growth Measurements

Last Modified on 07/29/2021 2:43 pm EDT



OP sets **all defaults to share all information**. Any individual decisions by Practice-users to restrict information sharing (access, use, or exchange) are the responsibility of the Practice in the implementation of its 21st Century Cures Act Information Blocking policies and procedures for its Practice and patients.

Version 14.19

Path: Clinical, Practice Management, or Billing tab > Patient Chart button > Well Visits or Encounters > New or Open Note button > Vitals/Growth

Overview

The sections below include steps entering Vitals, other measurements, and Growth Info. Also included below are steps to view Growth Charts and prior Growth Measurements.

Vital Signs: Standard Measurements



Note: BP Reference = latest NHLBI guidelines, Other Vital Sign Reference = Harriet Lane.

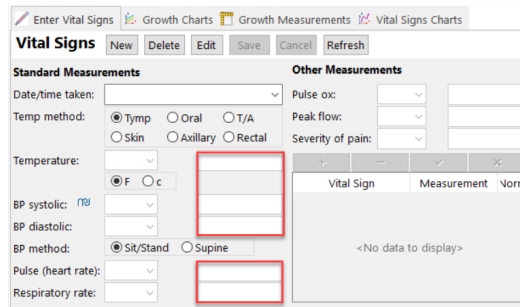
1. From an open Well Visit or Encounter note, click **Vitals/Growth**. The Vital Signs window displays the last saved record.
2. Click the **New** button. The current date and time are populated. The Date/time monitored field can be changed, if necessary.

3. Enter information in the Standard Measurements by clicking the drop-down or typing in the fields.



Note: The default position for BP measurement is **sit/stand**. To change to Supine, select the radio button. If multiple entries are done in the same day, Supine and Sit/Stand, an additional entry is required.

4. (Optional) Enter notes in the **Comment** field regarding the vitals measured.



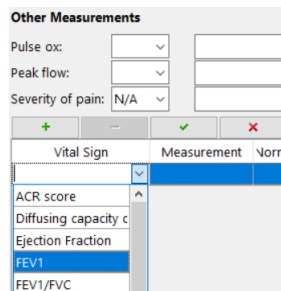
Vital Signs: Other Measurements (i.e. Pulse Ox, Peak flow, Severity of Pain, etc)

1. Enter information in the **Other Measurements** by clicking the drop-down or typing in the fields.
2. (Optional) Enter notes in the Comment field regarding the other measurements.



Note: If secondary vitals were not taken at the original time of the Vital Signs or were retaken click the **Add** button to add a new entry.

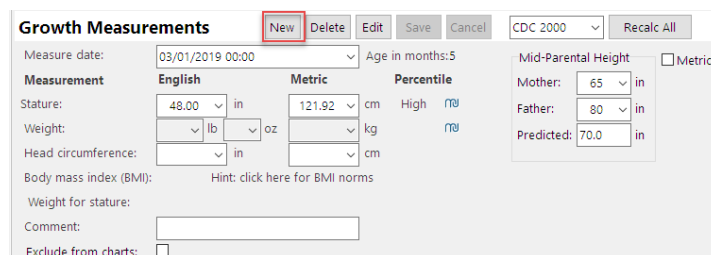
3. To add additional measurements not listed:
 - a. Click the **Add** button.
 - b. Click the drop-down in the **Vital Sign** field and select from the list.



- c. In the **Measurement** field, click the drop-down and use the number pad or type the measurement.
- d. Click into the **Norm** field and enter a value.
- e. Click the **Save** button.

Growth Measurements

1. Click the Growth Measurements tab.
2. Click the **New** button. The current date and time are populated. The Measure date field can be changed, if necessary.



3. Enter information in the **Measurement** fields by clicking the drop-down or typing in the fields.

Notes:



- You can enter the measurements in English (inches, pounds) or Metric (cm, kg) units. The system will automatically convert the measurements for you.
- Office Practicum calculates Growth Percentiles and Body Mass Index (BMI).

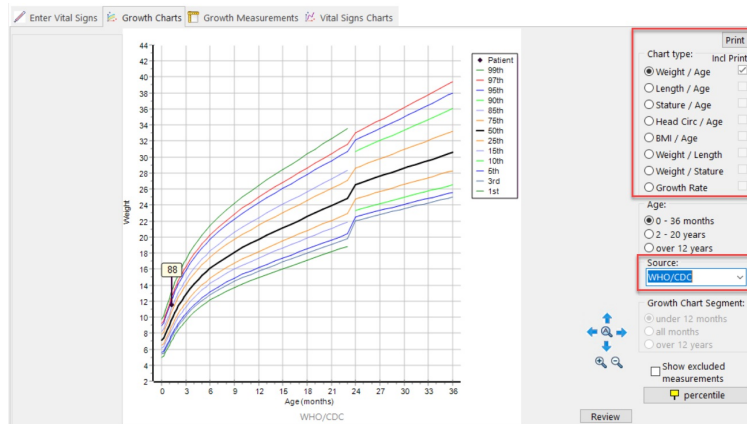
4. (Optional) Enter notes in the **Comment** field regarding the measurements. For example, if your office has different weight scales and you wanted to notate the scale used for a baby's weight check.
5. (Optional) Select the **Exclude from growth charts** checkbox if the measurement is not to show when a growth chart is viewed or printed, an example would be sick visits. Always follow the practice policy when selecting this checkbox.

View Growth Charts

1. Click the **Growth Charts** tab.
2. Select a **Chart type** radio button next to the desired graph on the right side of the window.



Note: If you are printing a Growth Chart, select the **Incl Print** checkboxes of the graphs you would like to print and click the **Print** button. Up to 4 graphs will fit on one page.



Note: Select an option from the **Source** drop-down menu to view graphs by different sources. The options are CDC 2000, WHO 2007, WHO/CDC or Down Syndrome.

View Prior Growth Measurements

1. Click the **Growth Measurements** tab.
2. (Optional) Growth Measurements can be added from this window by clicking the **New** button.


#	Exam Date	Age on Exam Date	Age (Mos)	Ex-clude	Stature (cm)	Stature %ile	Weight (kg)	Weight %ile	Head Circ (cm)	HC %ile	BMI	BMI %ile	VS %ile	Comment
1	03/01/2019 00	3 yrs. 9 mos.	45.5	<input checked="" type="checkbox"/>	121.9	High								
	11/22/2010 00		-53.8	<input type="checkbox"/>	147.3		34.019							
	05/05/2006 00		-108.3	<input type="checkbox"/>	131.4		24.948		49.2					
	05/09/2005 00		-120.2	<input type="checkbox"/>	125.7		22.68							
	05/10/2004 00		-122.2	<input type="checkbox"/>	114.3		19.958						48	
	05/17/2002 00		-144.0	<input type="checkbox"/>	107.2		17.237						42	
	05/18/2002 00		-155.9	<input type="checkbox"/>	101.6		15.876						50	
	04/08/2001 00		-169.2	<input type="checkbox"/>	96.5		13.154		49.2				13	
	12/10/2000 00		-173.1	<input type="checkbox"/>	94.0		12.701		48.8				16	
	05/16/2000 00		-180.0	<input type="checkbox"/>	88.9		13.154		48.0				71	
	03/17/2000 00		-181.9	<input type="checkbox"/>	96.8		11.34		49.2				Low	
	11/08/1999 00		-186.2	<input type="checkbox"/>	82.5		10.433		47.0				20	
	08/25/1999 00		-188.7	<input type="checkbox"/>	79.5		10.036		46.5				30	
	06/12/1999 00		-191.1	<input type="checkbox"/>	76.8		9.525		46.0				33	

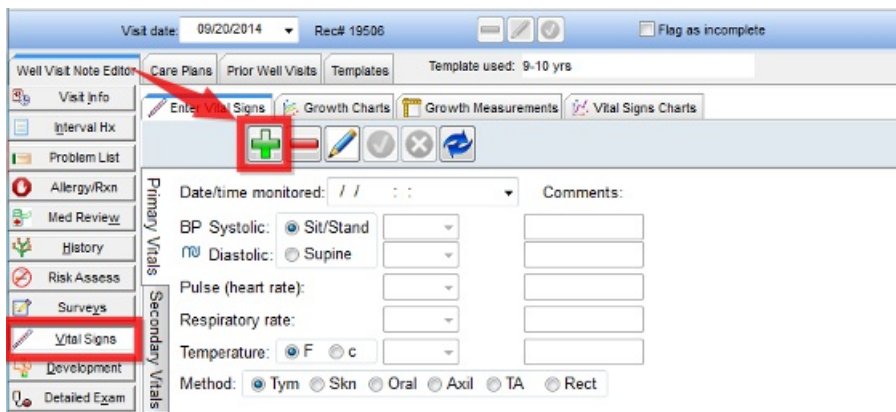
Version 14.10

Overview

In this section you will learn how to document Primary and Secondary Vital Signs and Growth Measurements for a patient.

Primary Vitals

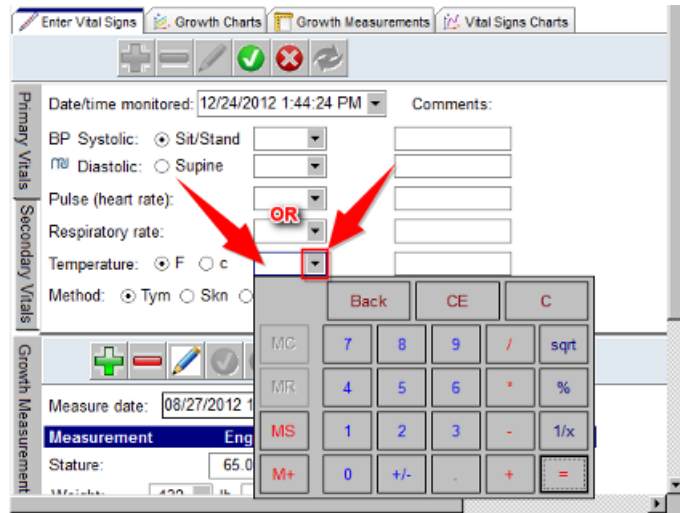
1. Click the **Vital Signs** tab in a well visit note. The Vital Signs window is displayed with the last vital sign entry.
2. Click the **Add a new set of vital signs** button  to add in a new entry. The Date and Time is populated.



3. Click the **Fields** and enter information.



Note: Numbers can be entered using numbers on keyboard or by accessing the on-screen keypad by clicking the drop-down menu.



Note: The default position for BP measurement is sit/stand. To change to Supine, select the **radio button**. If multiple entries are done in the same day, Supine and Sit/Stand, an additional entry is required. Prior vital signs are listed in the panel on the right. Select the **Date** to view vital signs taken on that day.


4. Type notes in the Comments section regarding the vitals measured, if applicable.

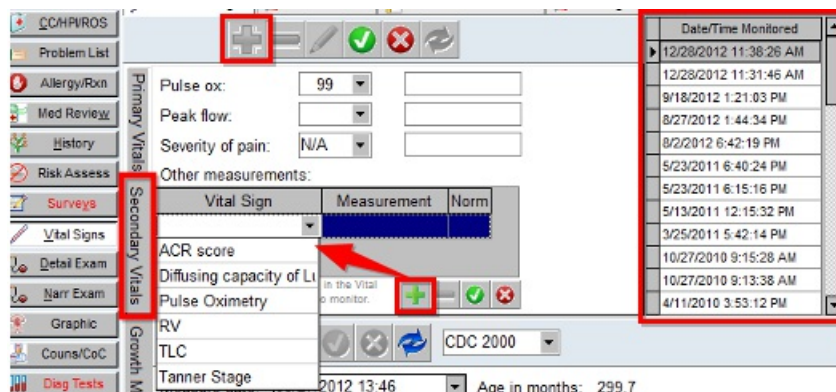


Secondary Vitals (i.e. Pulse Ox, Peak flow, ACR Score etc)

1. Click the **Secondary Vitals** tab.
2. Click the **Fields** and enter the information.

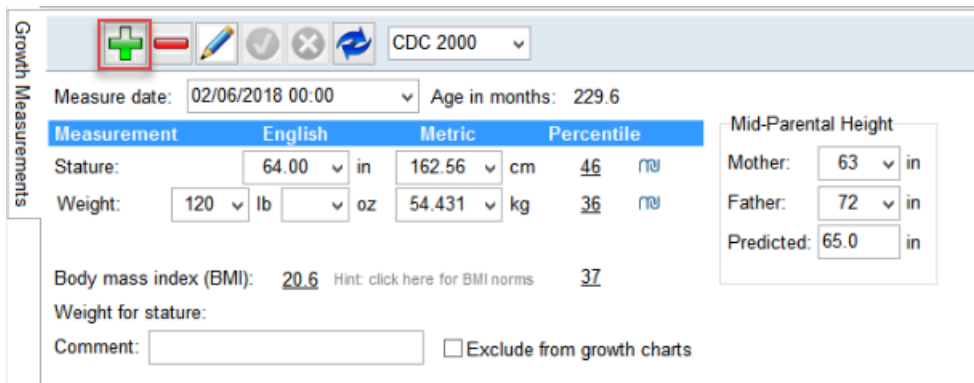
Note: Enter **Notes** in the Comment field. If secondary vitals were not taken at the original time of the Vital Signs or were retaken click the **Green Plus** button to add a new entry.

3. Click the **Green Plus** button  at the bottom of **Other measurements** to add additional vital signs for: ACR Score, Diffusing capacity of Lung for CO, Pulse Oximetry, RV, TLC or Tanner Stage.



Growth Measurements

1. Click the **Green Plus** button  in the Growth Measurements tab. The Date and Time are populated



2. Enter **information** in each Field. Enter or select from the drop-down menu to enter Growth Measurements.

- Enter the measurements in English (inches, pounds) or Metric (cm, kg) units. The system converts for you.
- For younger children, enter measurement as length or stature.
- Office Practicum calculates their Growth Percentiles and Body Mass Index (BMI).

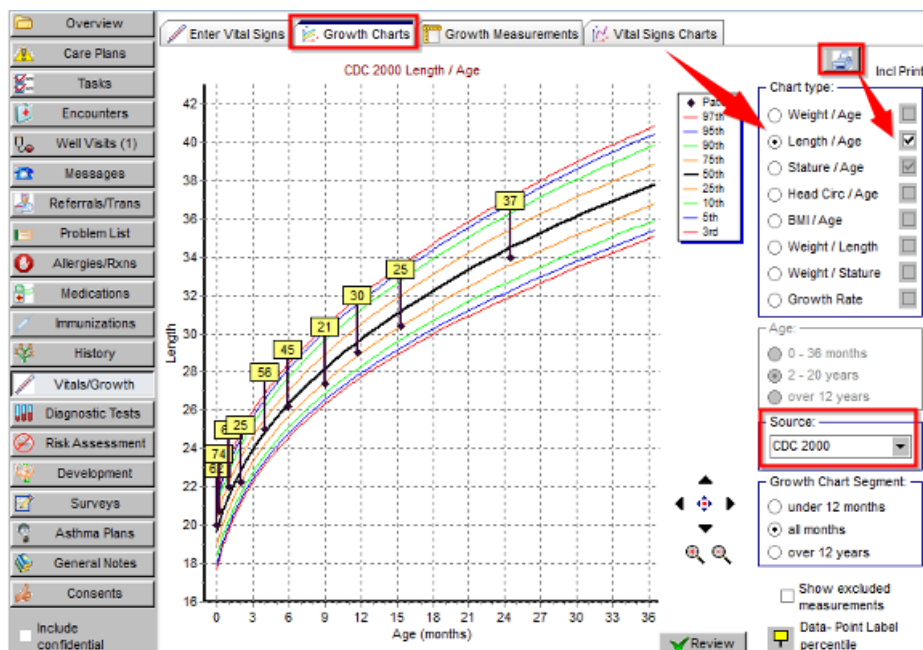
3. Enter **Notes** in the Comment field regarding the measurements. For Example, if your office has different weight scales and you wanted to notate the scale used for a baby's weight check..

- Select the **Exclude from growth charts** checkbox if you do not want to display the measurement when a growth chart is viewed or printed, an example would be sick visits. Always follow the practice policy when selecting this checkbox.

Viewing Growth Charts

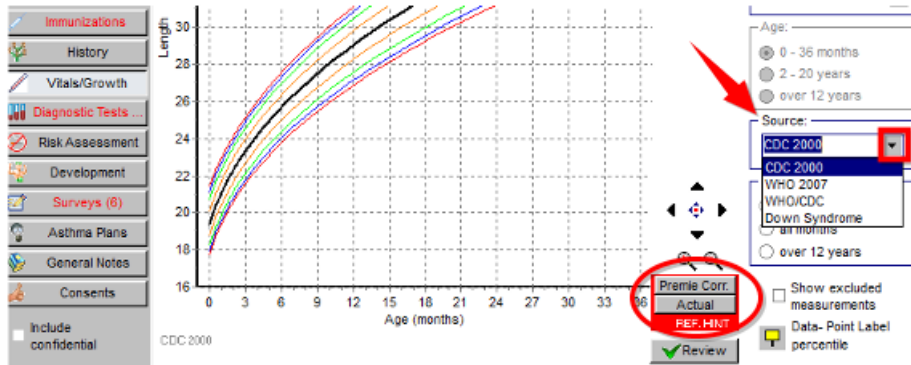
1. Click the **Growth Charts** tab.
2. Select the **Chart Type** radio button next to the desired graph on the right side of the window.

- **Note:** To print a growth chart, select the **Incl Print** checkboxes for the graphs you would like to print and click the **Printer** button. OP displays up to 4 graphs on one page.



Note: Select an **option** from the Source drop-down menu to view graphs by different sources. Available are CDC 2000, WHO 2007, WHO/CDC or Down Syndrome.

- If the gestational age entered in the Birth History tab is between 23 and 41 weeks and the child is 36 months or younger, there is an option for **Premie Corr.** on the growth chart. You can switch the view from Premie to Actual by clicking the **Buttons** on the Growth Charts tab.



Viewing Prior Growth Measurements

Click the **Growth Measurements** tab.

Note: New entries for Growth Measurements can also be added from this window.

ALLYSON J. TEST (2936) Sex: F DOB: 05/15/2005 Age: 13 yrs. 9 mos.

Overview | Enter Vital Signs | Growth Charts | **Growth Measurements** | Vital Signs Charts

Measure date: 03/08/2019 00:00 Age in months: 165.8

Stature: 60.00 in 152.4 cm 14th percentile

Weight: 88 lb 39.916 kg 13th percentile

Head circumference: in cm

Body mass index (BMI): 17.2 Hint: click here for BMI norms 21st percentile

Weight for stature: Exclude from growth charts

Comment:


Exam Date	Age on Exam Date	Age (Mos)	Exclude	Stature (in)	Stature %ile	Weight (lb/oz)	Weight %ile	Head Circ (cm)	HC %ile	BMI	BMI %ile	WS %ile	Comment
03/08/2019	13 yrs. 9 mos.	165.8	<input type="checkbox"/>	60.00	14	88' 0	13			17.2	21		
10/02/2018	13 yrs. 4 mos.	160.6	<input type="checkbox"/>	65.00	82	101' 0	43			16.8	19		
06/17/2011	6 yrs. 1 mos.	73.1	<input type="checkbox"/>	44.00	24	40' 0	20			14.5	30	26	
06/04/2010	5 yrs. 0 mos.	60.6	<input type="checkbox"/>	41.25	25	35' 0	17			14.5	28	24	
05/22/2009	4 yrs. 0 mos.	48.2	<input type="checkbox"/>	38.50	24	31' 0	17			14.7	30	20	
06/13/2008	3 yrs. 0 mos.	37.0	<input type="checkbox"/>	37.50	57	24' 5	Low			12.2	Low	Low	
06/08/2007	2 yrs. 0 mos.	24.8	<input type="checkbox"/>	33.00	23	21' 5	Low	47.0	35	13.8	Low	Low	

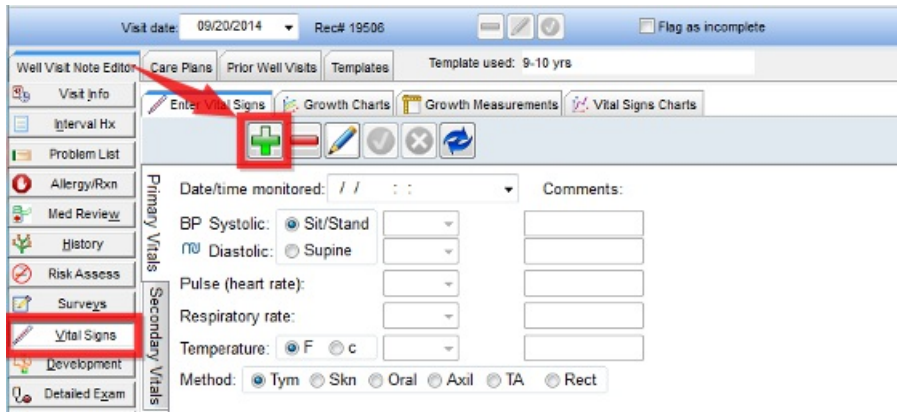
Version 14.8

Overview


In this section, you will learn how to document Primary and Secondary Vital Signs and Growth Measurements for a patient.

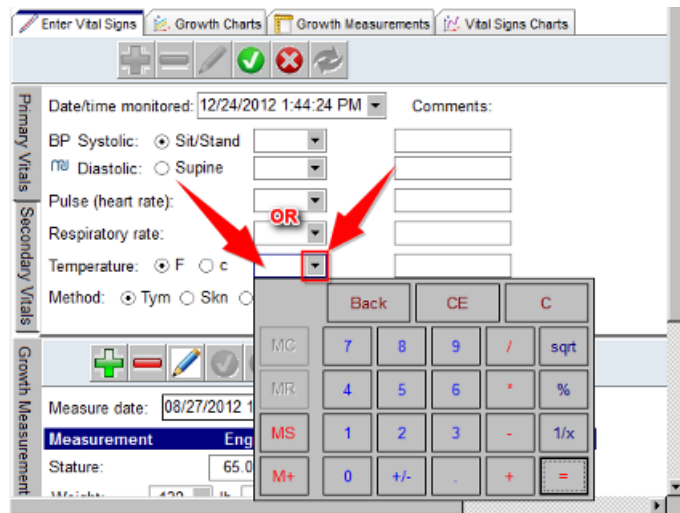
Primary Vitals


- Click the **Vital Signs** tab in a well visit note. The window is displayed with the last vital sign entry.
- Click the **Add a new set of vital signs** button  to add in a new entry. The Date and Time are populated.



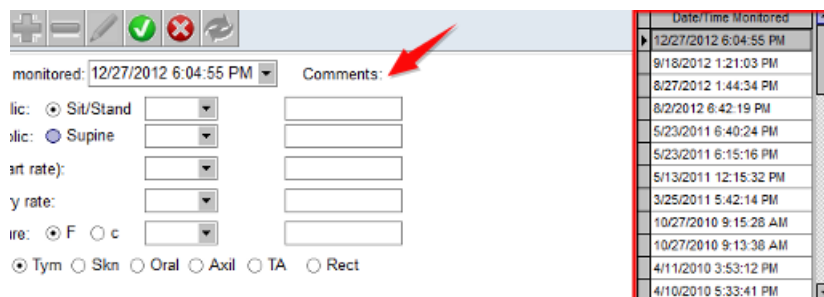
3. Enter **information** in each Field.

 **Note:** Numbers can be entered using numbers on keyboard or by accessing the on-screen keypad by clicking the drop-down menu.




 **Note:** The default position for BP measurement is sit/stand. To change to Supine, select the **radio button**. If multiple entries are done in the same day, Supine and Sit/Stand, an additional entry is required. Prior vital signs are listed in the panel on the right. Select the **Date** to view vital signs taken on that day.

4. Type notes in the Comments section regarding the vitals measured, if applicable.




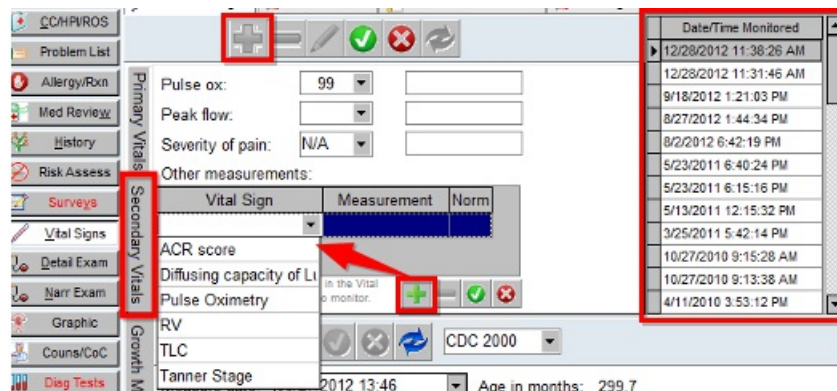
Secondary Vitals (i.e. Pulse Ox, Peak flow, ACR Score etc)

1. Click the **Secondary Vitals** tab.
2. Enter **information** in each Field.

 **Note:** Enter **Notes** in the Comment field. If secondary vitals were not taken at the original time of the Vital Signs or were

retaken click the **Green Plus** button to add a new entry.

3. Click the **Green Plus** button  at the bottom of the **Other measurements** section to add additional vital signs for: ACR Score, Diffusing capacity of Lung for CO, Pulse Oximetry, RV, TLC or Tanner Stage.



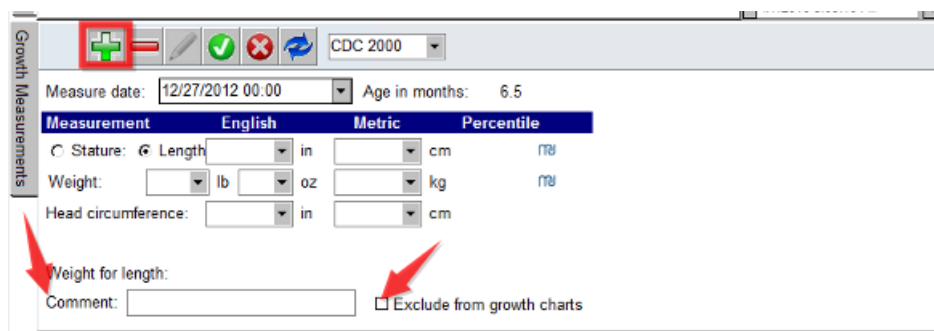
Vital Sign	Measurement	Norm
ACR score		
Diffusing capacity of Lt		
Pulse Oximetry		
RV		
TLC		
Tanner Stage		

Growth Measurements

1. Click the **Green Plus** button  in the **Growth Measurements** tab. The Date and Time are populated.
2. Enter **Information** in each Field. Enter or select **Growth Measurements** from the drop-down menu.



- Enter the measurements in English (inches, pounds) or Metric (cm, kg) units. The system converts for you.
- For younger children, enter measurement as length or stature
- Office Practicum calculates their Growth Percentiles and Body Mass Index (BMI).



Measure date: 12/27/2012 00:00 Age in months: 6.5

Measurement	English	Metric	Percentile
Stature: <input checked="" type="radio"/> Length	in	cm	70
Weight: <input type="radio"/> lb <input type="radio"/> oz	kg		70
Head circumference:	in	cm	

Weight for length: Exclude from growth charts

Comment:

3. Enter **Notes** in the Comment field regarding the measurements, if applicable. For Example, if your office has different weight scales and you wanted to notate the scale used for a baby's weight check..



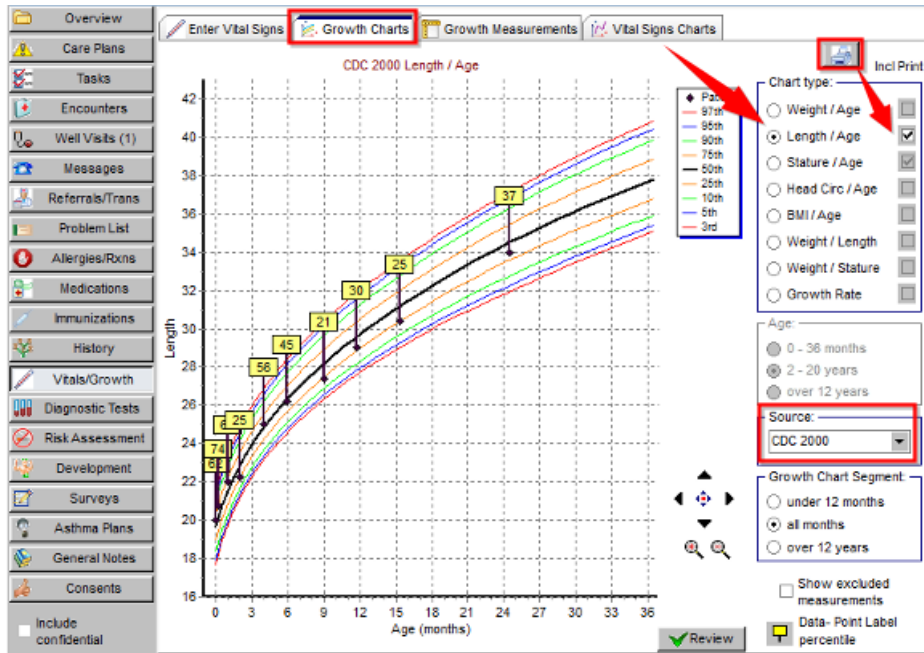
- Select the **Exclude from growth charts** checkbox if the measurement should not be displayed when a growth chart is viewed or printed, an example would be sick visits. Always follow the practice policy when selecting this checkbox.

Viewing Growth Charts

1. Click the **Growth Charts** tab.
2. Select the **Chart Type** radio button next to the desired graph on the right side of the window.

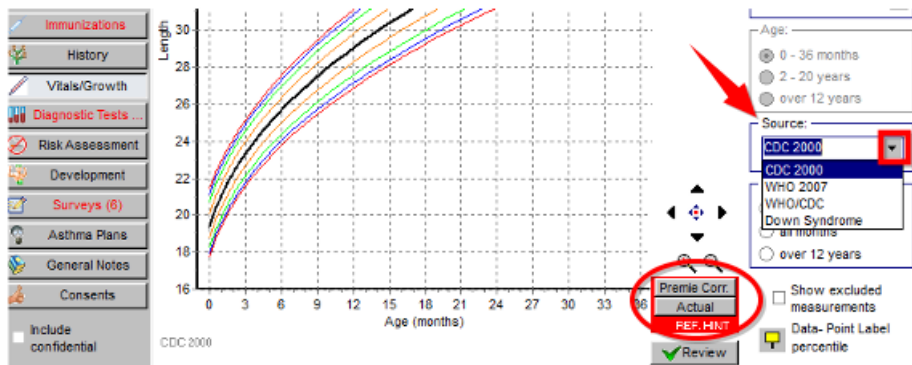


Note: To print a growth chart, select the **Incl Print** checkboxes for the graphs you would like to print and click the **Printer** button. OP prints up to 4 graphs on one page.



Note: Select an **option** from the Source drop-down menu to view graphs by different sources. Available are CDC 2000, WHO 2007, WHO/CDC or Down Syndrome.

- If the gestational age entered in the Birth History tab is between 23 and 41 weeks and the child is 36 months or younger, there is an option for **Premie Corr.** on the growth chart. Click the **Buttons** to switch the view from Premie to Actual on the Growth Charts tab.



Viewing Prior Growth Measurements

Click the **Growth Measurements** tab.

Note: New entries for Growth Measurements CDC can also be added from this window, if needed.

Overview | Enter Vital Signs | Growth Charts | **Growth Measurements** | Vital Signs Charts

CDC 2000 Recalc All

Measure date: 01/05/2012 00:00 Age in months: 73.6

Measurement	English	Metric	Percentile
Stature:	44.50 in	113.03 cm	27
Weight:	45 lb 0 oz	20.45 kg	43
Head circumference:	in	cm	
Body mass index (BMI):	16		66
Weight for stature:			66

Comment: Exclude from growth charts

Exam Date	Age on Exam Date	Age (Mos)	Exclude	Stature (in)	Stature %ile	Weight (lb'oz)	Weight %ile	Head Circ (cm)	HC %ile	BMI	BMI %ile	WS %ile
01/05/2012 (6 yrs. 1 mos.)		73.6	<input type="checkbox"/>	44.50	27	45' 0	43			16	66	66
12/09/2010 (5 yrs. 0 mos.)		60.7	<input type="checkbox"/>	42.25	34	41' 0	52			16.2	72	68
04/05/2010 (4 yrs. 4 mos.)		52.5	<input type="checkbox"/>	40.50	34	36' 13	44			15.8	58	56
12/03/2009 (4 yrs. 0 mos.)		48.5	<input type="checkbox"/>	39.75	36	37' 0	59			16.5	76	72
12/09/2008 (3 yrs. 0 mos.)		36.7	<input type="checkbox"/>	35.50	8	30' 8	36			17.1	80	70
12/03/2007 (2 yrs. 0 mos.)		24.5	<input type="checkbox"/>	34.00	37	27' 0	37	48.4	42	16.5	47	52
03/01/2007 (15 mos. 12 day)		15.4	<input type="checkbox"/>	30.40	25	21' 3	9	46.4	26			25
11/10/2006 (11 mos. 21 day)		11.7	<input type="checkbox"/>	29.00	30	20' 6	19	45.5	28			47
08/22/2006 (9 mos. 3 days)		9.1	<input type="checkbox"/>	27.40	21	18' 0	13	44.8	36			41
07/10/2006 (7 mos. 21 days)		7.7	<input type="checkbox"/>			16' 12	12					