

Billing Center: ERA Payments

Last Modified on 08/10/2021 12:51 pm EDT

Version 14.19



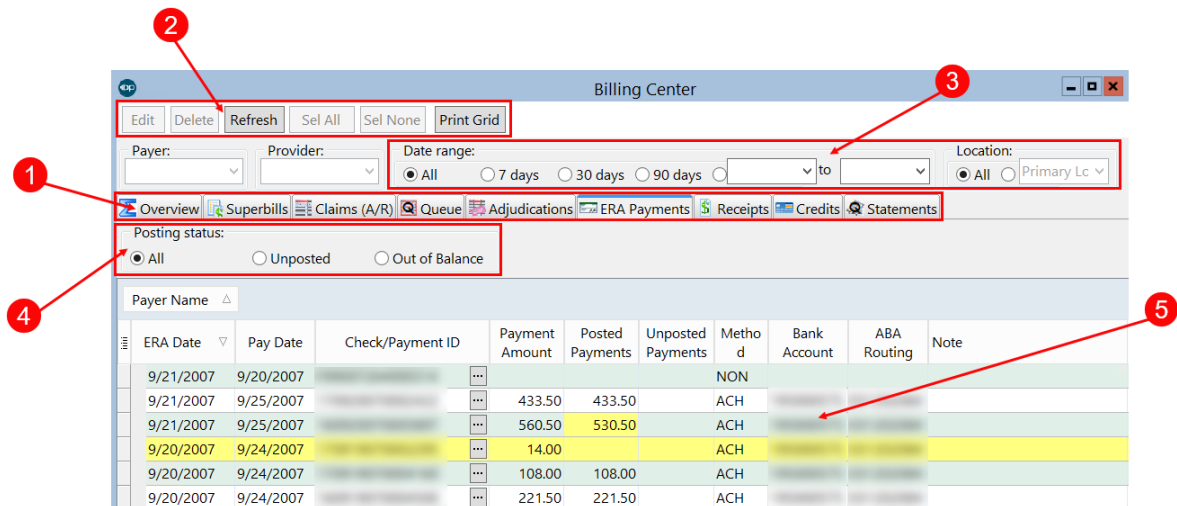
This window map article points out some of the important aspects of the window you're working with in OP but is not intended to be instructional. To learn about topics related to using this window, see the **Related Articles** section at the bottom of this page.

About Electronic Billing Center: ERA Payments Tab

Path: Billing tab > Billing Center button > ERA Payments tab

The Electronic Billing Center, or eBilling Center, is the one-stop location in Office Practicum where claims are tracked. It lets you view claims from the time they are created until the time they are paid.

The ERA Payments tab shows all ERA Payments that were processed into OP.



Electronic Billing Center: ERA Payments Tab Map

Number	Section	Description
1	Electronic Billing Center Tabs	<p>The Electronic Billing Center contains the following tabs:</p> <ul style="list-style-type: none"> • Overview • Superbills • Claims (A/R) • (Transmit) Queue • Adjudications • ERA Payments • Receipts • Credits • Statements (Queue)
2	Function buttons	<p>The Function buttons change based upon the tab selected. However, some main function buttons appear on every tab. The main function buttons are Edit, Delete,</p>

		Refresh, Select All (items), Select None, and Print Grid.
3	Scope	The Scope selections determine the data available in the ERAs grid. Only the Date Range and Location scopes may be used in the ERA Payments tab.
4	Posting Status	The Posting Status radio buttons allow users to focus on All ERAs, Unposted ERAs, or Out of Balance ERAs. The Override Performed radio button is also available but only by permission.
5	ERA Payments grid	The ERA Payments grid shows the ERA Payments that fit the criteria set in the Date Range, Location, and Posting Status sections of the window. The grid can also be grouped and sorted using the column headers.

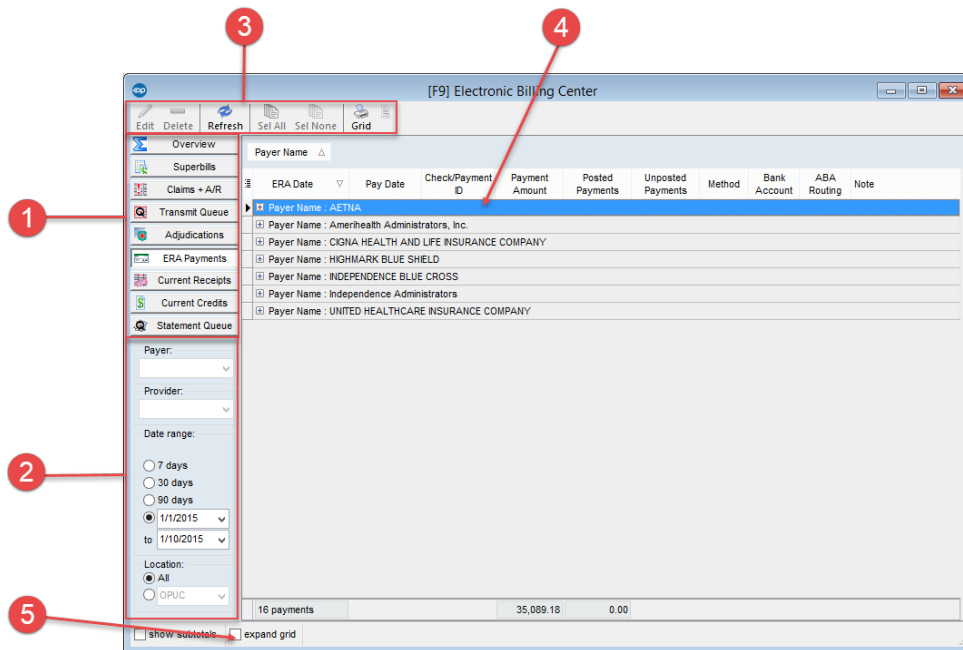
Version 14.10

About Electronic Billing Center: ERA Payments Tab

Path: Smart Toolbar > Billing button > ERA Payments tab

The Electronic Billing Center, or eBilling Center, is the one-stop location in Office Practicum where claims are tracked. It lets you view claims from the time they are created until the time they are paid.

The ERA Payments tab shows all ERA Payments with archived transactions that were paid by the highlighted Check/Payment ID.



Electronic Billing Center: ERA Payments Tab Map

Number	Section	Description
1	Electronic Billing Center Left Tabs	<p>The Electronic Billing Center contains the following tabs:</p> <ul style="list-style-type: none"> • Overview • Superbills • Claims + A/R • Transmit Queue • Statement Queue • Adjudications

		<ul style="list-style-type: none"> • ERA Payments • Current Receipts • Current Credits
2	Scope	The Scope selections determine the data available in the ERAs grid. Only the Date and Location scopes may be used in the ERA Payments tab.
3	Function buttons	The Function buttons change based upon the tab selected. However, some main function buttons appear on every tab. The main function buttons are Edit, Delete, Select All (items), Select None, and Print the list of items in the grid.
4	ERA Payments grid	The ERA Payments grid shows all ERA Payments that have been processed into your system. Each payer can be expanded to show the individual payments received.
5	Expand grid checkbox	The Expand Grid checkbox expands and collapses the categories within the grid.

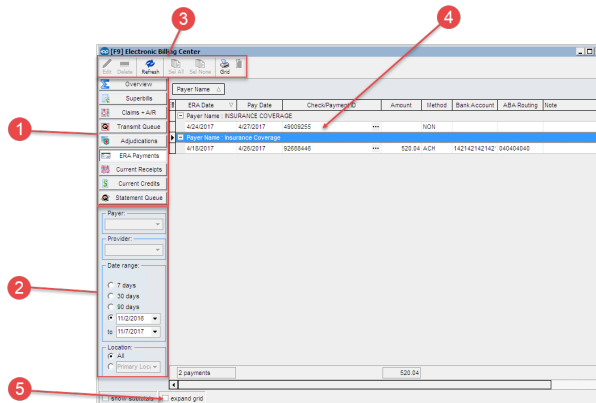
Version 14.8

About Electronic Billing Center: ERA Payments Tab

Path: Smart Toolbar > Billing button > ERA Payments tab

The Electronic Billing Center, or eBilling Center, is the one-stop location in Office Practicum where claims are tracked. It lets you view claims from the time they are created until the time they are paid.

The ERA Payments tab shows all ERA Payments with archived transactions that were paid by the highlighted Check/Payment ID.



Electronic Billing Center: ERA Payments Tab Map

Number	Section	Description
1	Electronic Billing Center Left Tabs	<p>The Electronic Billing Center contains the following tabs:</p> <ul style="list-style-type: none"> • Overview • Superbills • Claims + A/R • Transmit Queue • Statement Queue • Adjudications • ERA Payments • Current Receipts

		<ul style="list-style-type: none">• Current Credits
2	Scope	The Scope selections determine the data available in the Adjudications grid.
3	Function buttons	The Function buttons change based upon the tab selected. However, some main function buttons appear on every tab. The main function buttons are Edit, Delete, Select All (items), Select None, and Print the list of items in the grid.
4	ERA Payments grid	The ERA Payments grid shows all ERA Payments with archived transactions that were paid by the highlighted Check/Payment ID.
5	Expand grid checkbox	The Expand Grid checkbox expands and collapses the categories within the grid.
