

Installing OP on a Client Workstation

Last Modified on 09/25/2023 2:26 pm EDT

Installing Office Practicum

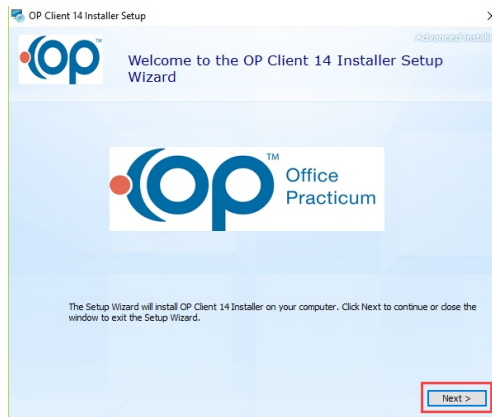
The client workstation install program can be downloaded from www.opmed.net. You will need to login with your practice credentials and then navigate to Categories > Installations and select OP Client Workstation Setup.

1. Locate the OPClient14installer.exe on your desktop and double-click the **icon**.

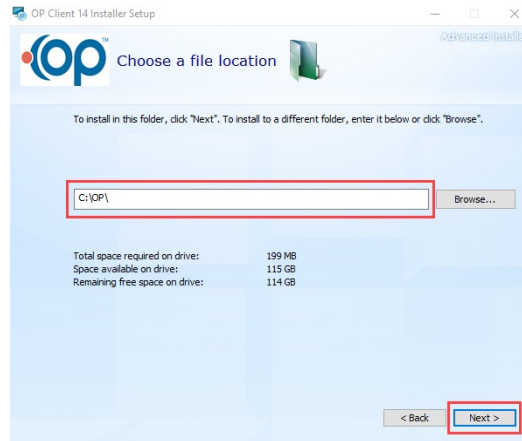


Note: Before you click the Next button, ensure that the gdb_common folder that is on the server is mapped.

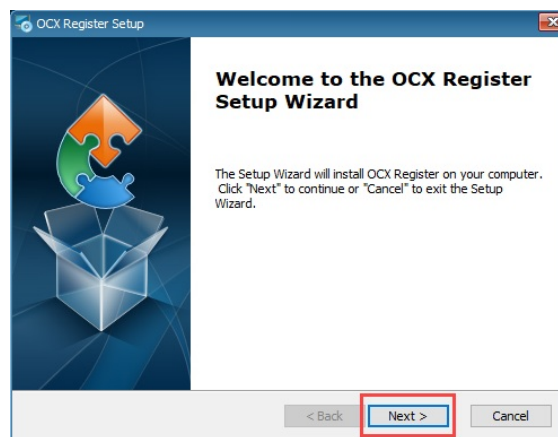
2. To map the gdb_common folder, right-click **Start** and select **Explore**. This opens the File Explorer. From the menu located at the top, select **Tools > Map Network Drive**. On this screen, select the **drive letter** for the mapping (we recommend **X:**). Enter the **IP address** and **gdb_common share** in the format `\\ipaddress\gdb_common`. Click the **Connect** button. If you are prompted for a username and password, enter the username and password for your server and select the **Remember Password** checkbox. This will map the drive. If you get an error, you may need to contact your IT person for the correct way to map a network drive within your network. Once the gdb_common folder is mapped, click the **Next** button.



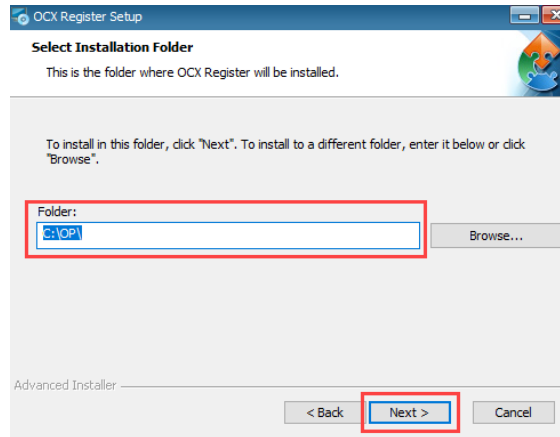
3. Select the **location** where OP will be installed. The default location is C:\OP.
4. Click the **Next** button.



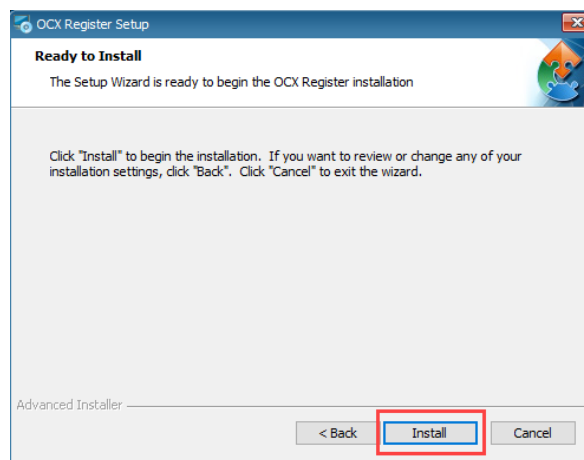
5. During the install of Office Practicum there will be another setup for OCX. Select the **Next** button.



6. Do not edit this, click the **Next** button.

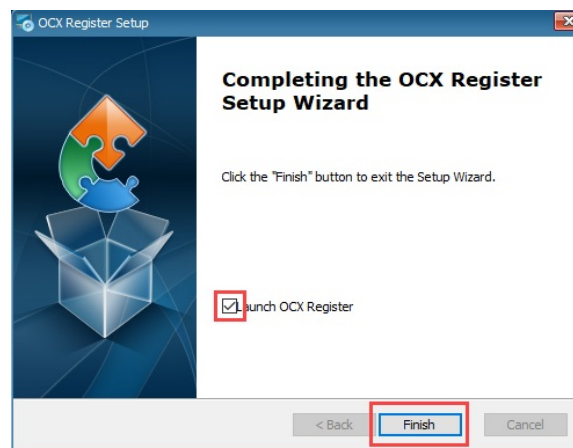


7. Click the **Install** button.

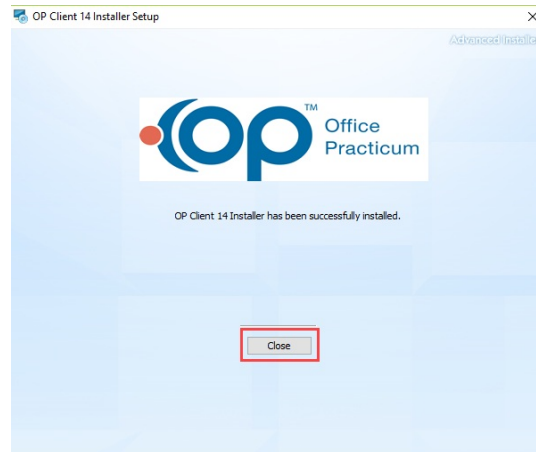


8. Select the **Launch OCX Register** checkbox.

9. Click the **Finish** button.



10. A Firebird security prompt is displayed. Click the **Yes** button to install.



11. Click the **Close** button.
12. Click the **Office Practicum** icon on the desktop to complete the update and open OP.
13. There should be the OP icon, along with a Connexinviewer icon on the desktop. Any user may log in to this workstation and have access to both.



Note: If there are workstations that do not update properly, following the installation, please click [here](#) for assistance.