

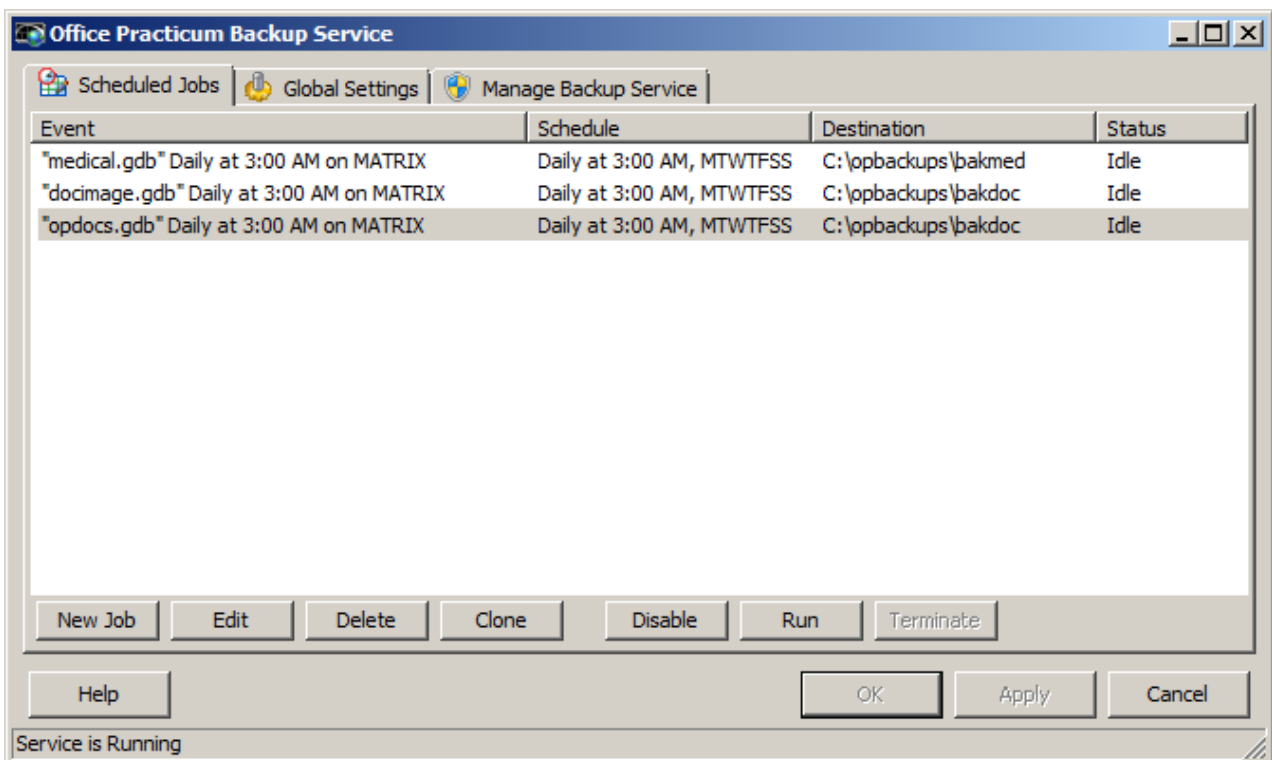
Important Content Update Message

We are currently updating the OP Help Center content for the release of OP 20. OP 20 (official version 20.0.x) is the certified, 2015 Edition, version of the Office Practicum software. This is displayed in your software (**Help tab > About**) and in the Help Center tab labeled Version 20.0. We appreciate your patience as we continue to update all of our content.

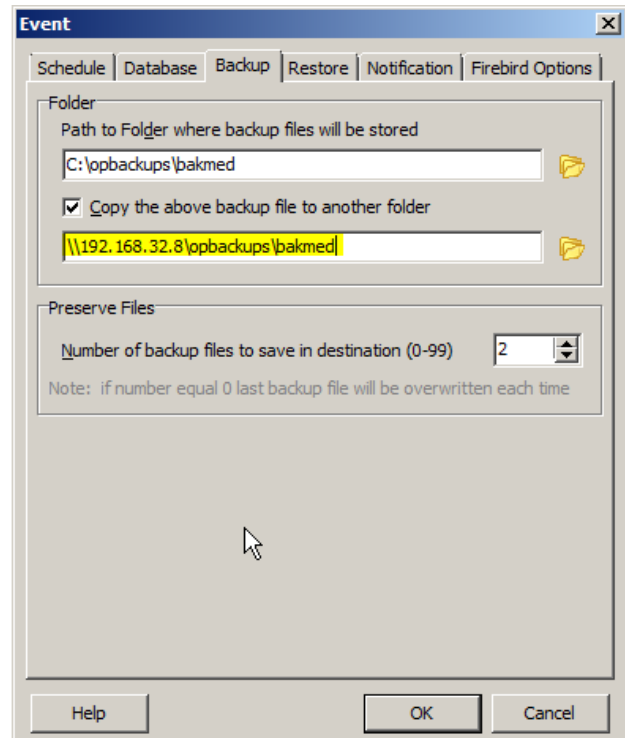
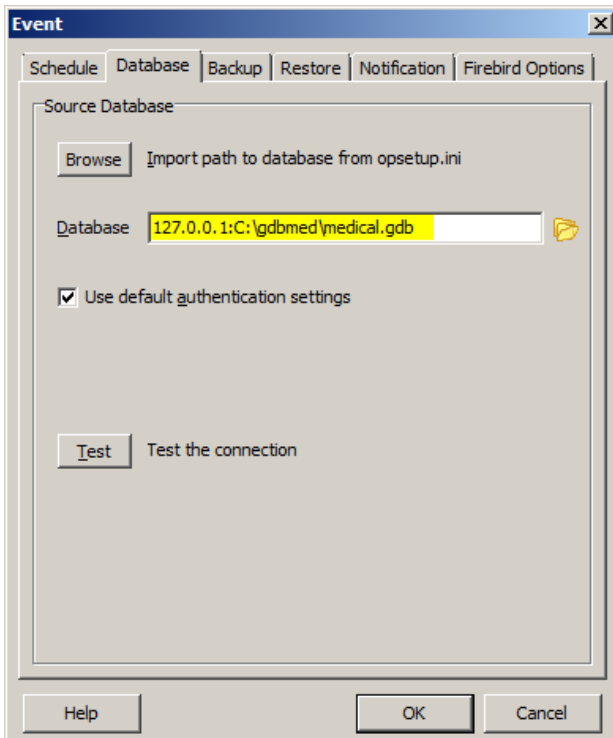
Running Backups to a NAS

Last Modified on 12/23/2019 3:24 pm EST

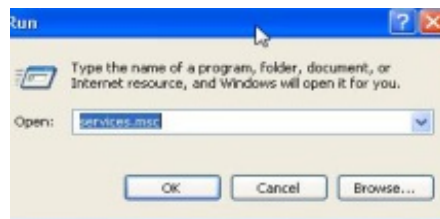
1. On emergency server or main server install OP Backup program. Since FBak does not currently support restoring of databases onto NAS devices you will need to create separate NAS backup jobs. In total after adding the NAS backup jobs you will have two jobs to perform a traditional backup/restore of the medical and image database and another two jobs specifically for the backup of the databases to a NAS device.



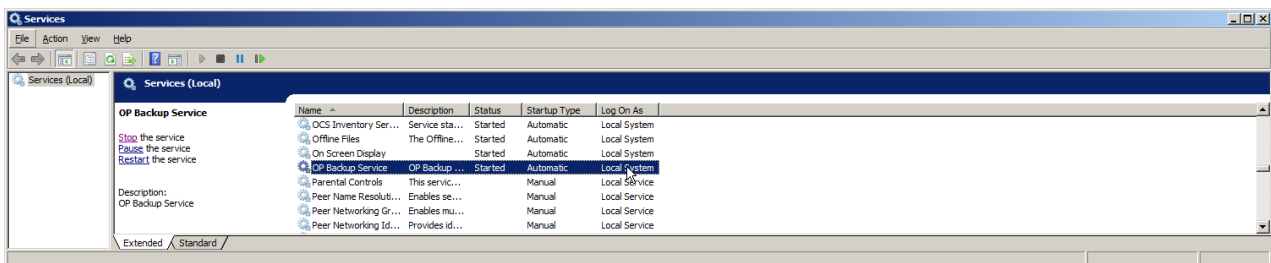
2. To create the NAS backup jobs set the database location to the database files found in the gdbmed directory on the main server. The backup locations need to be set such that the primary backup location is a locally attached device and the secondary backup location is a UNC path to the NAS device. Ensure that a restore is not enabled. Once completed click OK and then click Apply and Close to save the newly created jobs.



3. By default the backups will not run unless the log on name used by the OP Backup Program service is changed from the SYSTEM account to that of a user name and password that is authorized to Read/Write on the remote NAS device.
4. Change the service log on name by going to the services snap-in on the designated backup server.

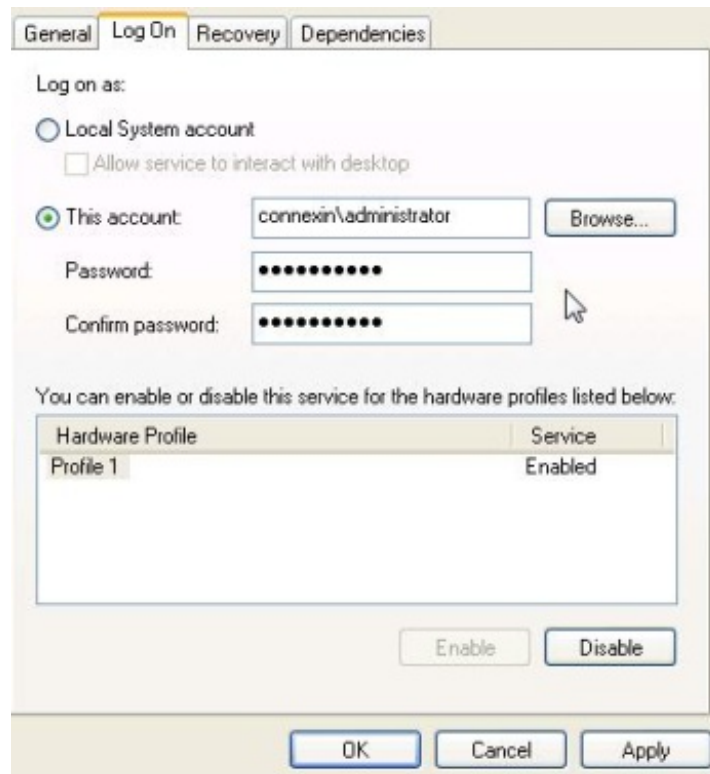


5. Once in the services pane scroll down and find the OP Backup Program.



6. Right click on the service and left click on properties. When the properties window opens up click on the Log On tab. Click the radio button for This Account and enter in a valid user name and password that has Read/Write rights to the remote NAS device. Once this is done click Apply and OK.

- a. For Domain Users, some NAS devices support joining to Active Directory (AD) and authenticating users from AD. If this is the case this seems to be the most seamless and easy to configure option. Join the NAS to AD and add an AD user that you want to designate with the right to Read/Write the FBAK directory on the NAS. Use this username and password in the Log On section of the OP Backup Service service.
 - b. For Local Workgroup user, you will need to create a local user account on the backup server that has the same user name and password as the Remote NAS. Ex. If the NAS is authenticated with user: jsmith password: jsmith123 then you will need to create a local account on the PC with the same user name and password.
 - The reason behind this is Windows will not allow you to specify a log on user account that does not exist on the local machine or within a given domain.
7. Stop and start the OP Backup Service service after making the changes.



8. Go back into the OP Backup program and right click on the newly created NAS jobs and run the backup jobs to ensure that everything has been set correctly.



Note: Perform the backup during non-business hours so you are not slowing down your practice.

