

### Important Content Update Message

We are currently updating the OP Help Center content for the release of OP 20. OP 20 (official version 20.0.x) is the certified, 2015 Edition, version of the Office Practicum software. This is displayed in your software (**Help tab > About**) and in the Help Center tab labeled Version 20.0. We appreciate your patience as we continue to update all of our content.

## Linking Welch Allyn Device to OP

Last Modified on 12/23/2019 4:05 pm EST



**Note:** Linking Welch Allyn Devices to the OP software only applies to Client Server clients. The OP software does not support any Welch Allyn devices in OP cloud.

Prior to contacting OP it is highly recommended that you have previously installed the Welch Allyn device on your computer and it is recognized in device manager as such. The following Welch Allyn models are compatible with OP software based on the drivers and install method that we provide:

- Spot Vital Signs LXi
- Spot Vital Signs
- Vital Signs Monitor 300 (VSM 300)
- VSM 5200
- VSM 6000

Welch Allyn devices are only supported over a USB connection. Wifi or Bluetooth connections methods are not supported. For usage with the OP software, the Welch Allyn device should be powered on prior to launch the OP software. For more information on the listed supported devices visit:

<https://www.welchallyn.com/content/welchallyn/americas/en/insights-and-solutions/emr-connectivity/emr-connectivity.html>.

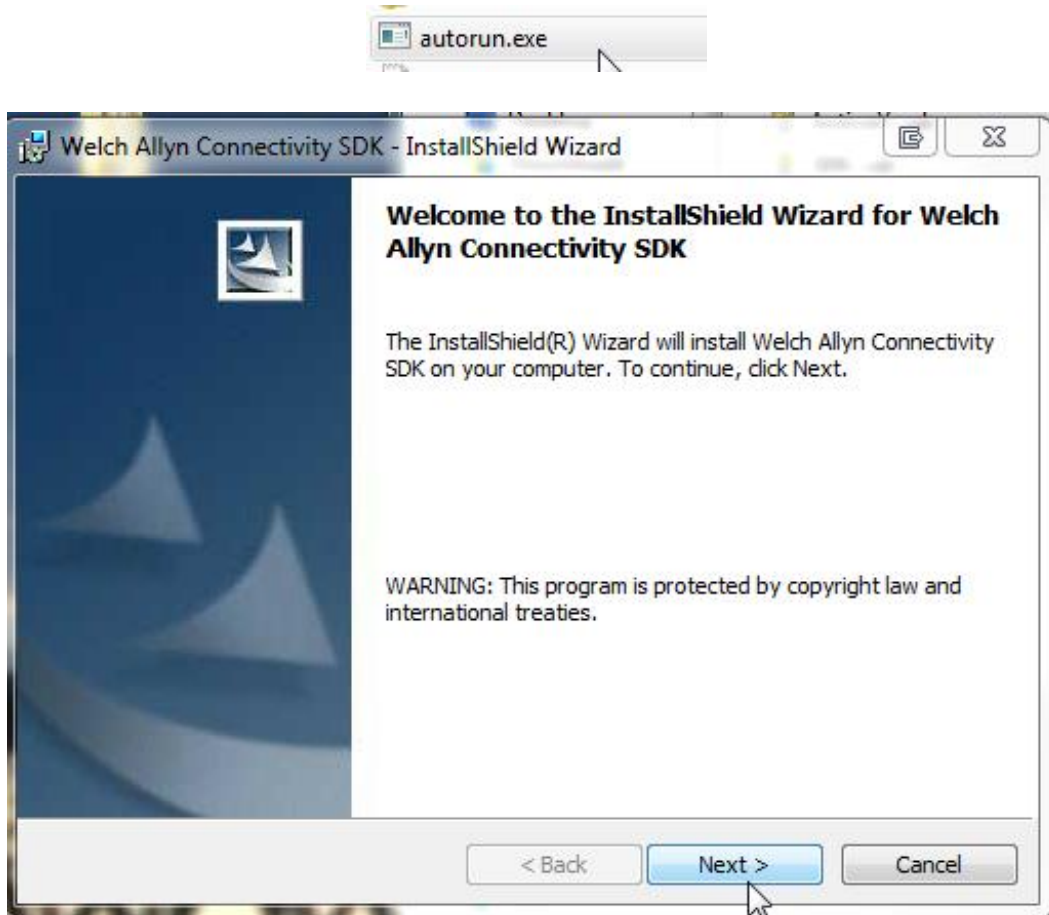


**Note:** Once installed contact OP and an Office Practicum tech will assist in the installation of the Welch Allyn interface.

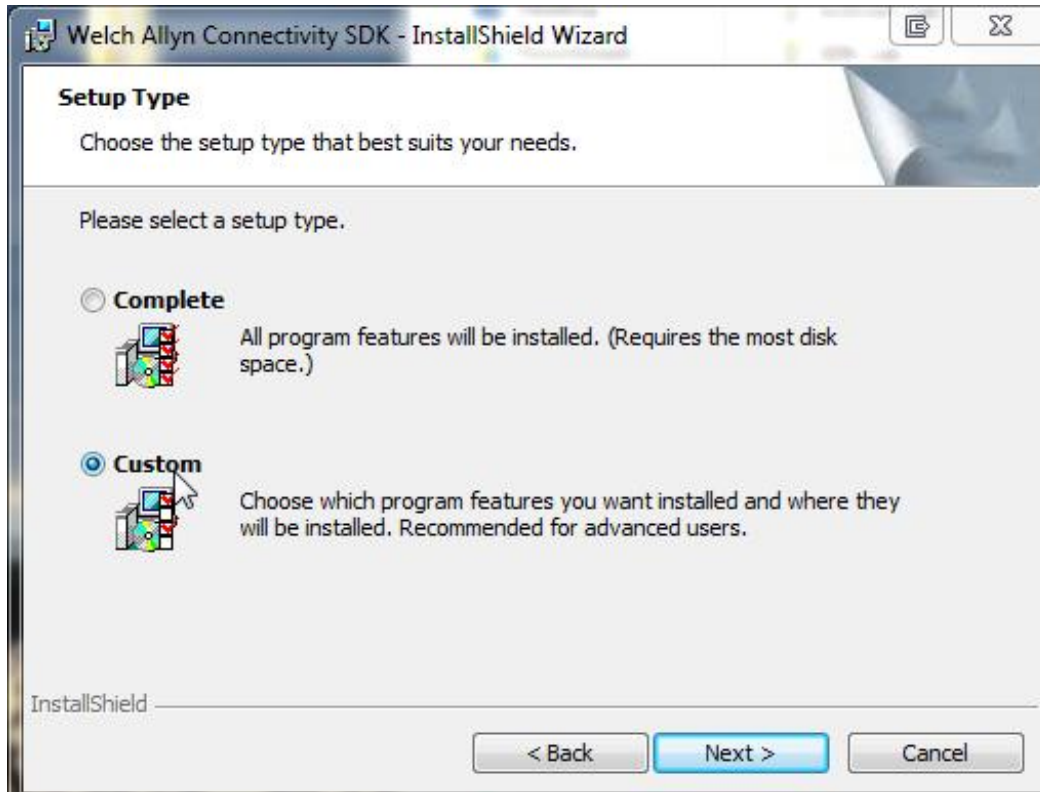
Installation of the Welch Allyn SDK onto a client workstation.

1. Download the needed Welch Allyn installer package from the following link:  
<https://www.opmed.net/executable/Welch.zip>.

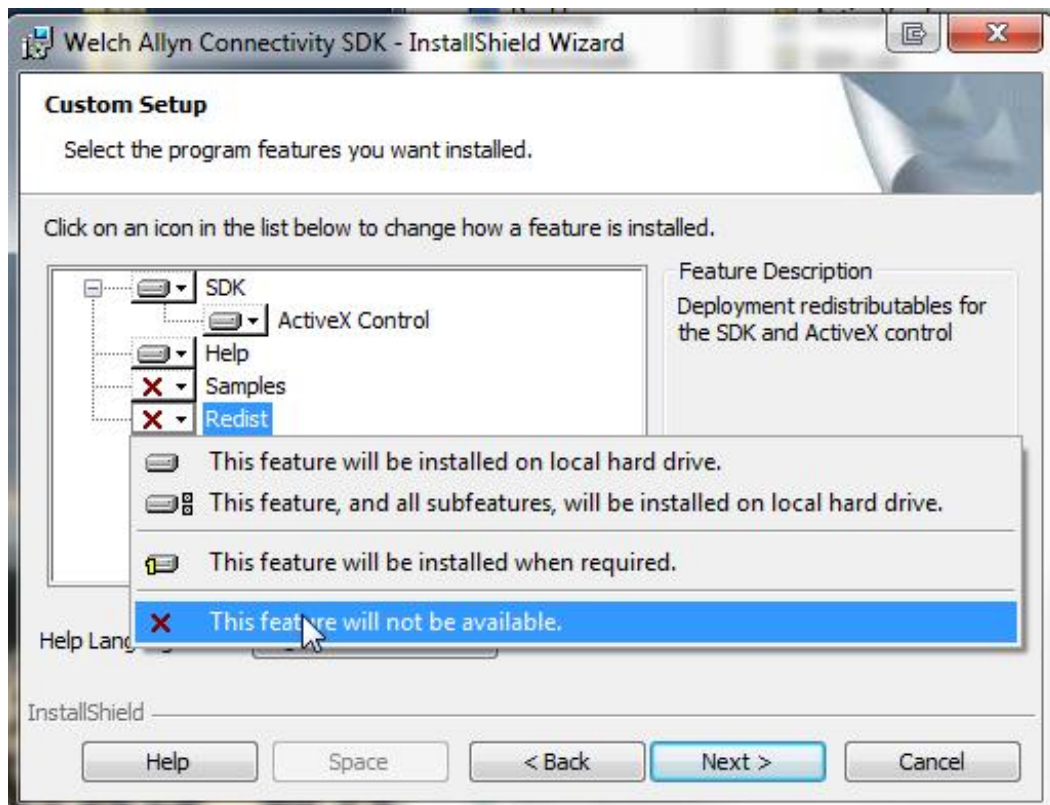
2. Once downloaded, extract the file and open up the directory pertaining to the version of the operating system your running, 32bit (x86) or 64bit (x64).
  - Regardless of the version you select the installation steps are identical for both.
3. Double-click the **autorun.exe** to launch the install.



4. On the Setup Type screen select the radio button for a "Custom" install, then click next to proceed with installation.

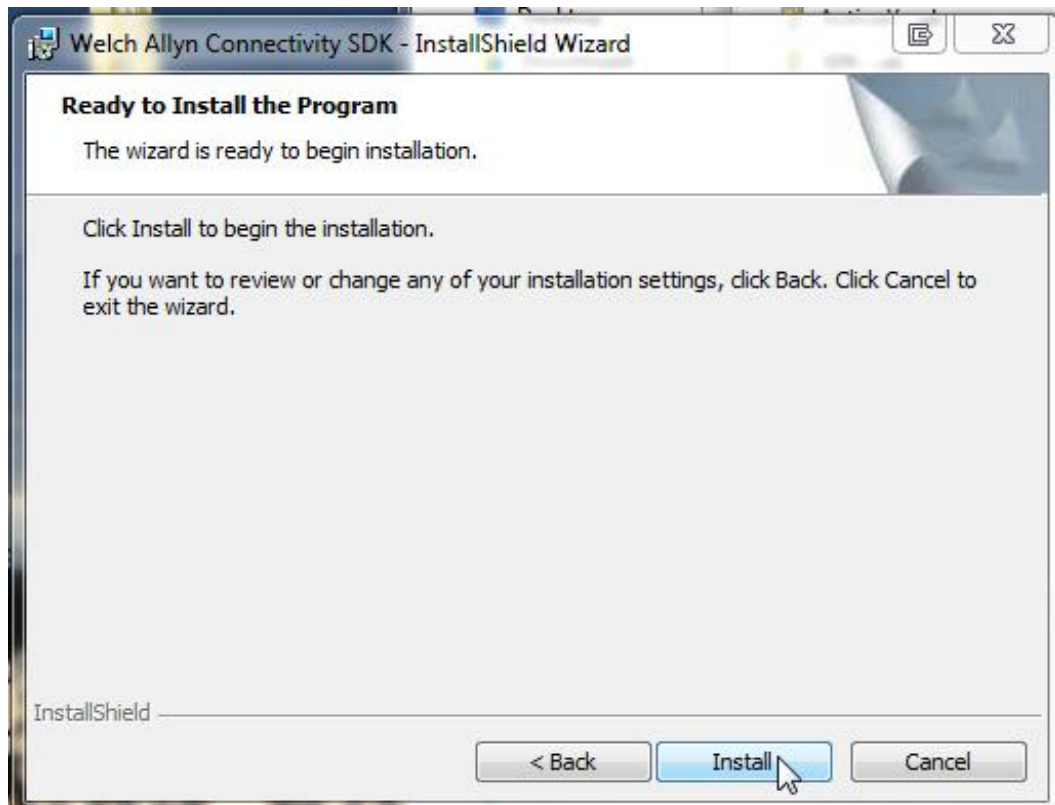


5. From the Custom Setup window, select **This feature will not be available** from the Redist and Samples drop-down menus. Click the **Next** button.



6. Prior to clicking the Install button to confirm installation of the SDK, ensure the Welch Allyn

device is connected and powered on. If the device is not connected and powered on the installation of the SDK drivers will fail.



**Note:** If you receive an error message during install it is most likely due to the Welch Allyn device not being installed and recognized by Windows. If this occurs cancel the install and ensure the Welch Allyn device is recognized and connected to your computer.

7. Once the installation has completed, click the **Finish** button.