

### Important Content Update Message

We are currently updating the OP Help Center content for the release of OP 20. OP 20 (official version 20.0.x) is the certified, 2015 Edition, version of the Office Practicum software. This is displayed in your software (**Help tab > About**) and in the Help Center tab labeled Version 20.0. We appreciate your patience as we continue to update all of our content.

# Downloading and Installing OP 14 on a Server

Last Modified on 12/23/2019 1:56 pm EST

## New Client/Server Install Process



**Warning:** A server install should not be run if your databases is already physically on the server. Doing so can overwrite your database. Only install the server on a separate server and move the database after the OP software install is complete.

1. Download most recent server installer pack from [www.opmed.net](http://www.opmed.net) onto the server.
2. Once downloaded double-click the executable file (.exe file) to begin the installation process.
3. At first install window, click the **Next** button to continue install.

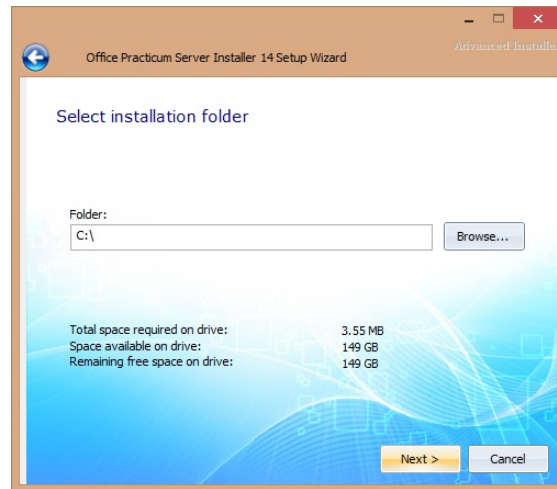


4. The Select Destination Location window appears. Select the largest data partition in which to install OP. Click the **Next** button after selecting the destination directory to continue the installation. (Remember this location)

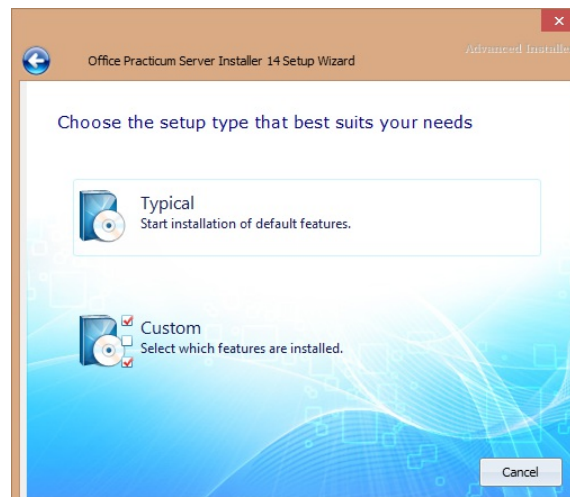


**Warning:** If the databases are located in the default path (C:gdbmed or D:gdbmed), there is the potential for those databases to be overwritten during installation. Please perform the

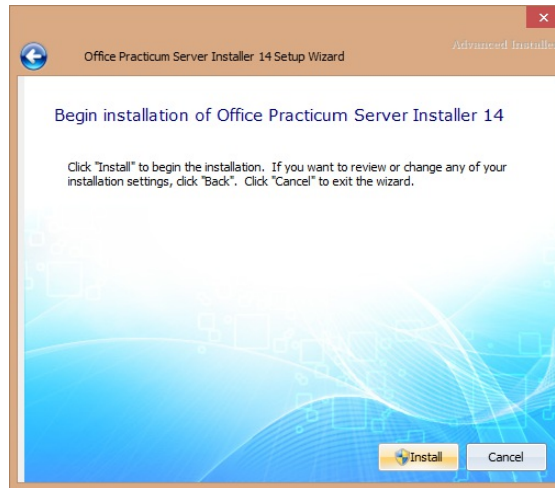
installation on a clean server and then move the database (C:gdbmed or D:gdbmed) after the OP software install is complete.



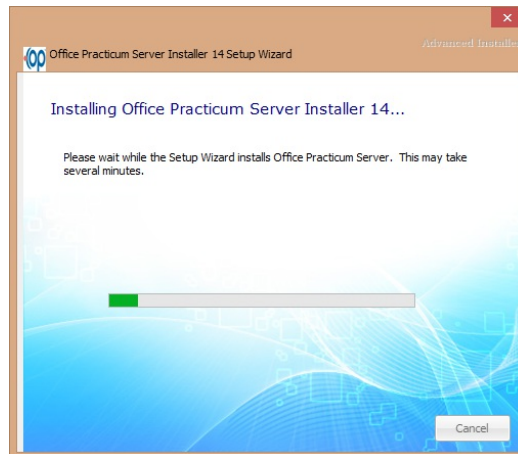
5. When the Installation Type window appears, select the Typical Install to start the installation of all the default features.



6. You will now begin the installation of the Office Practicum Server. Click the **Install** button to begin the installation.



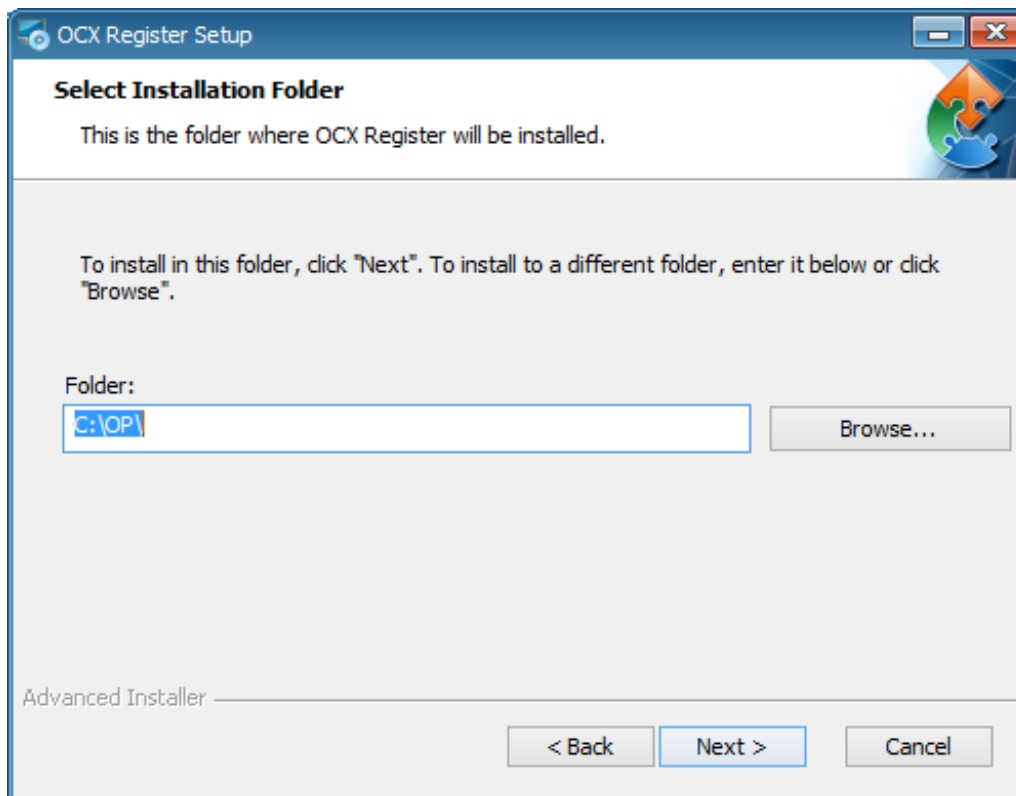
7. Please wait while the Setup Wizard installs the Office Practicum Server. A green bar indicates how far along the installation has progressed.



8. The OCX Resister is displayed. This installs the OCX Register onto your computer. Click the **Next** button to continue.

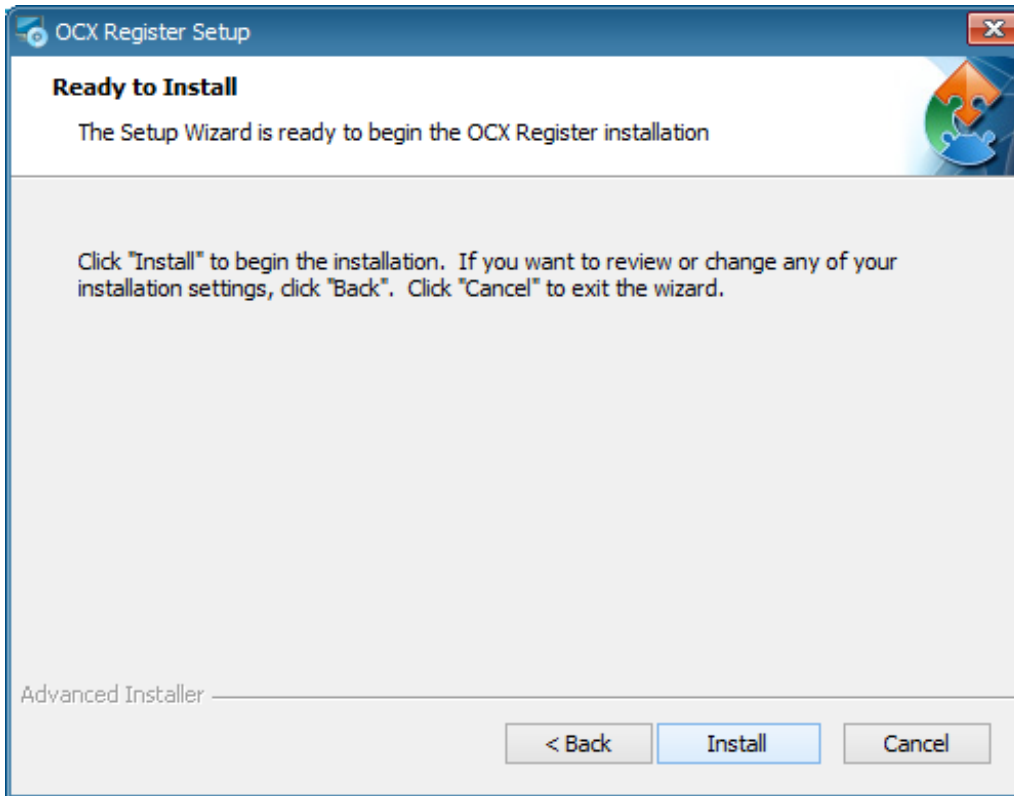


9. Select where you will want the OCX Register to be installed. Set the install directory location to the location set in the previous step. Then, click the **Next** button to continue.

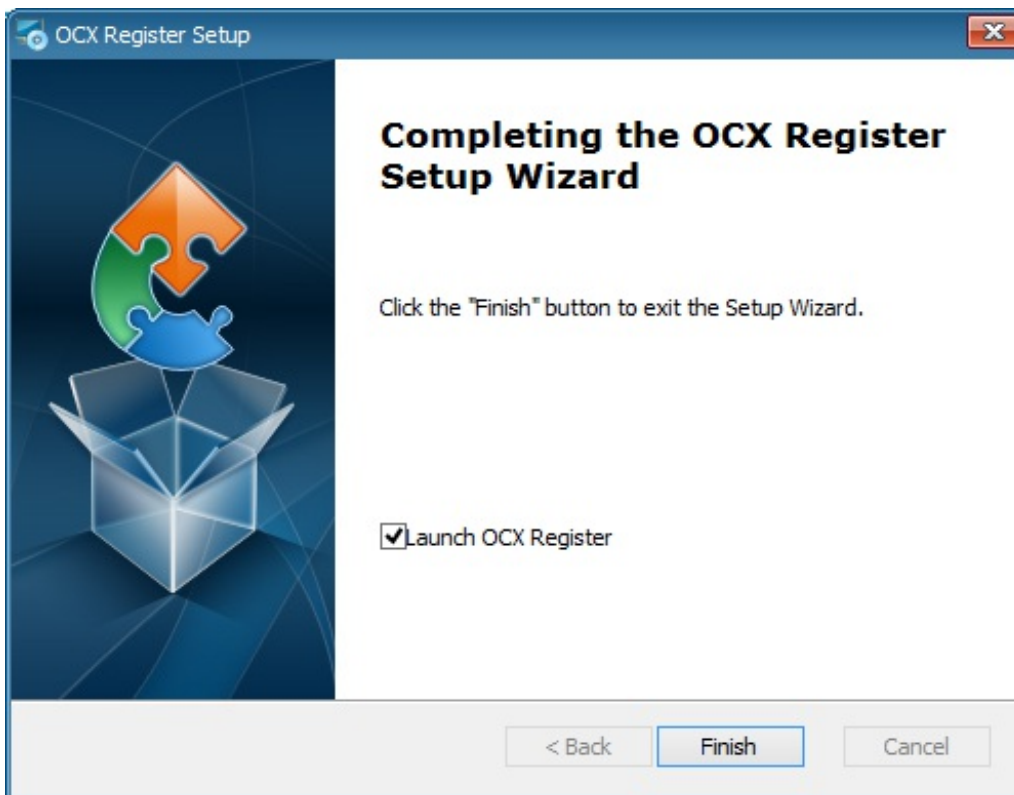


10. The OCX Register is Ready to Install. Click the **Install** button when you are ready to install

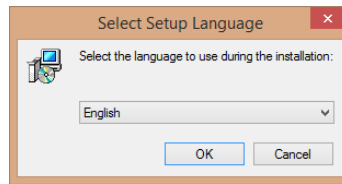
the OCX Register.



11. After the OCX Register has completed its installation, click the **Finish** button.



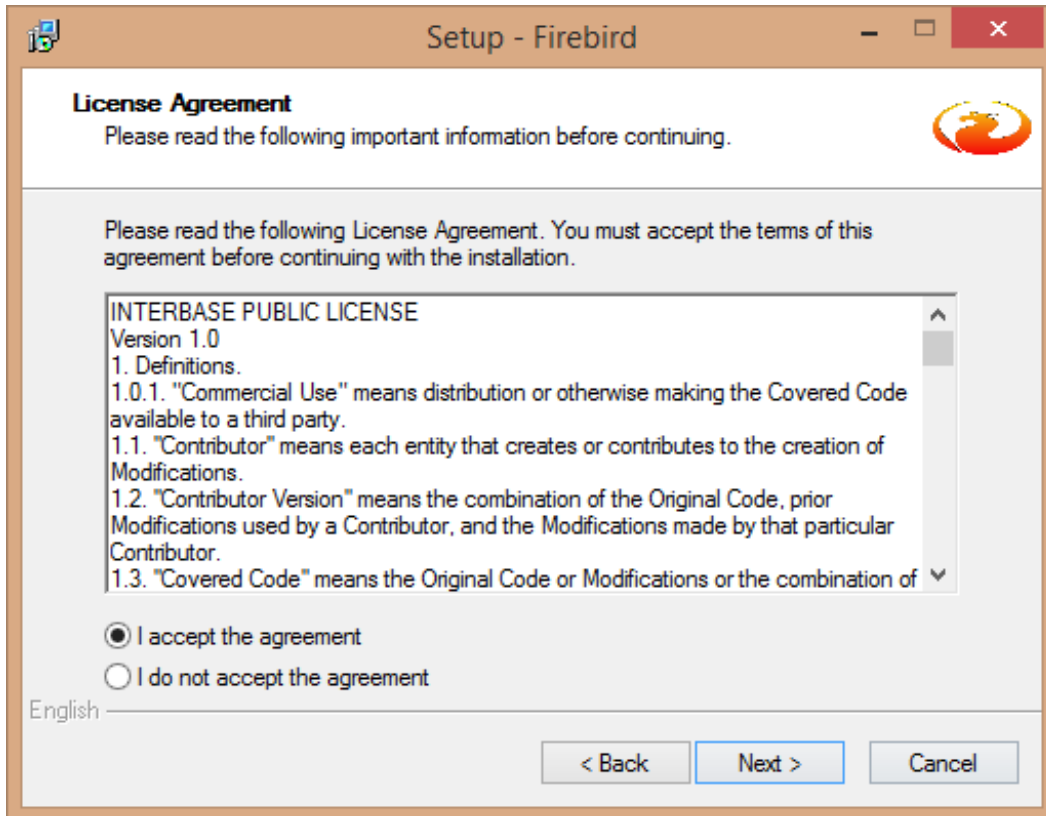
12. Select the language you wish to use during the next part of the setup.



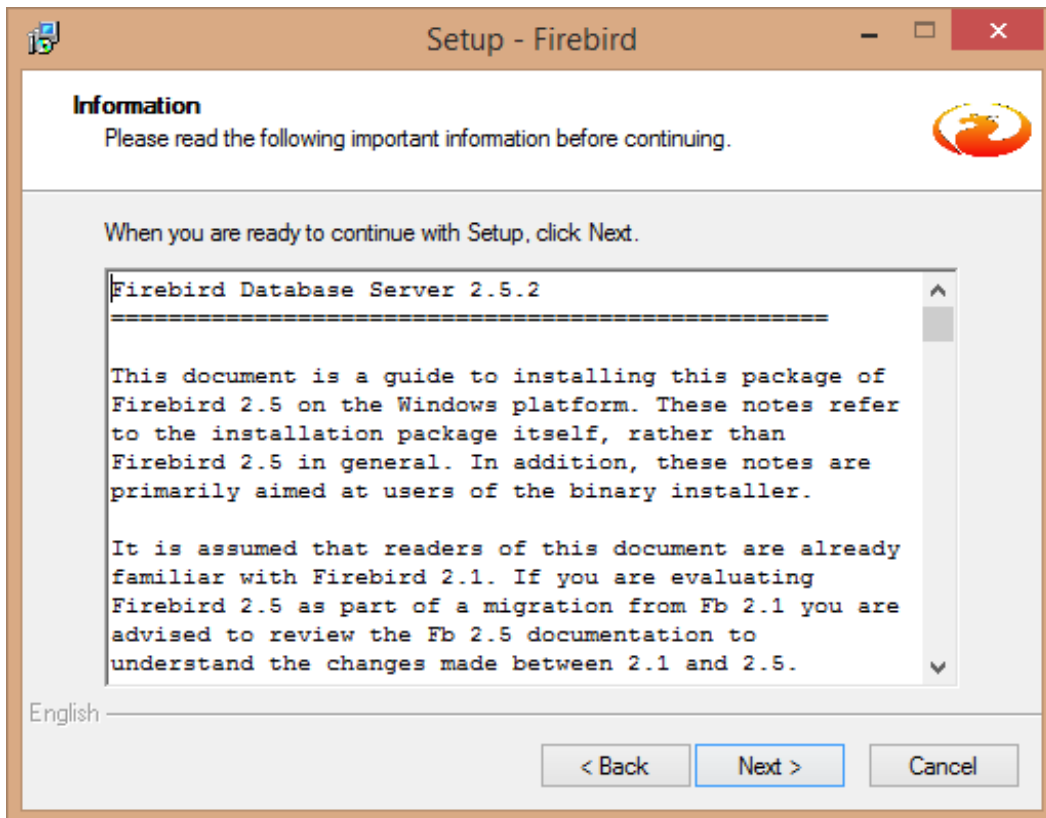
13. The Firebird Setup Welcome screen is displayed. Close all other applications before configuring Firebird. Click the **Next** button to continue.



14. On the Firebird License Agreement, read the terms and accept the agreement. Click the **Next** button to continue.

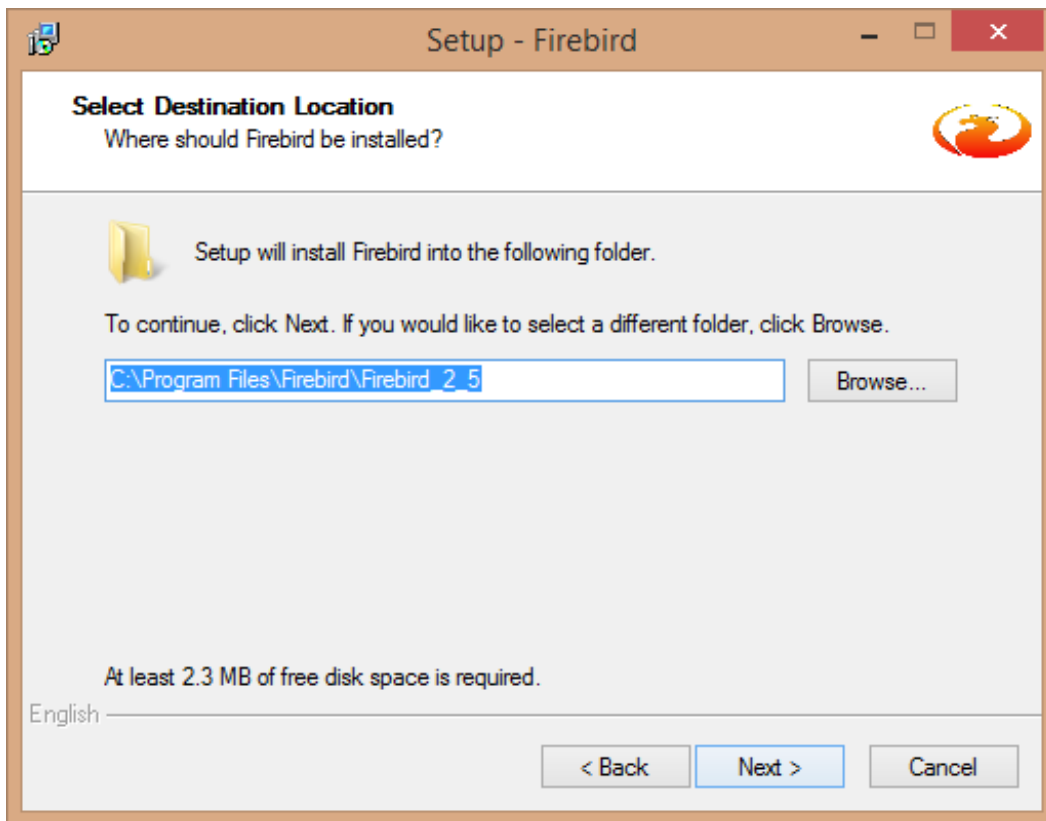


15. The Firebird Database Server Information is displayed. Click the **Next** button.



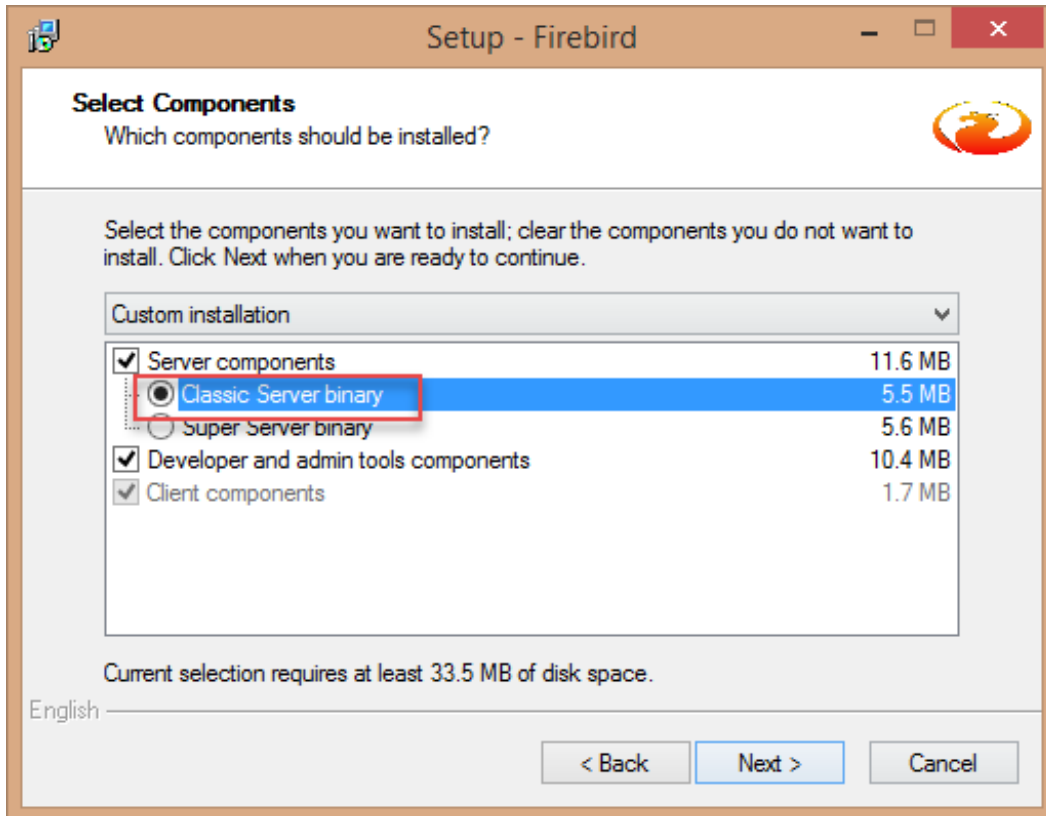
16. The Select Destination Location is displayed. It is recommended leave the default path.

Click the **Next** button to continue.

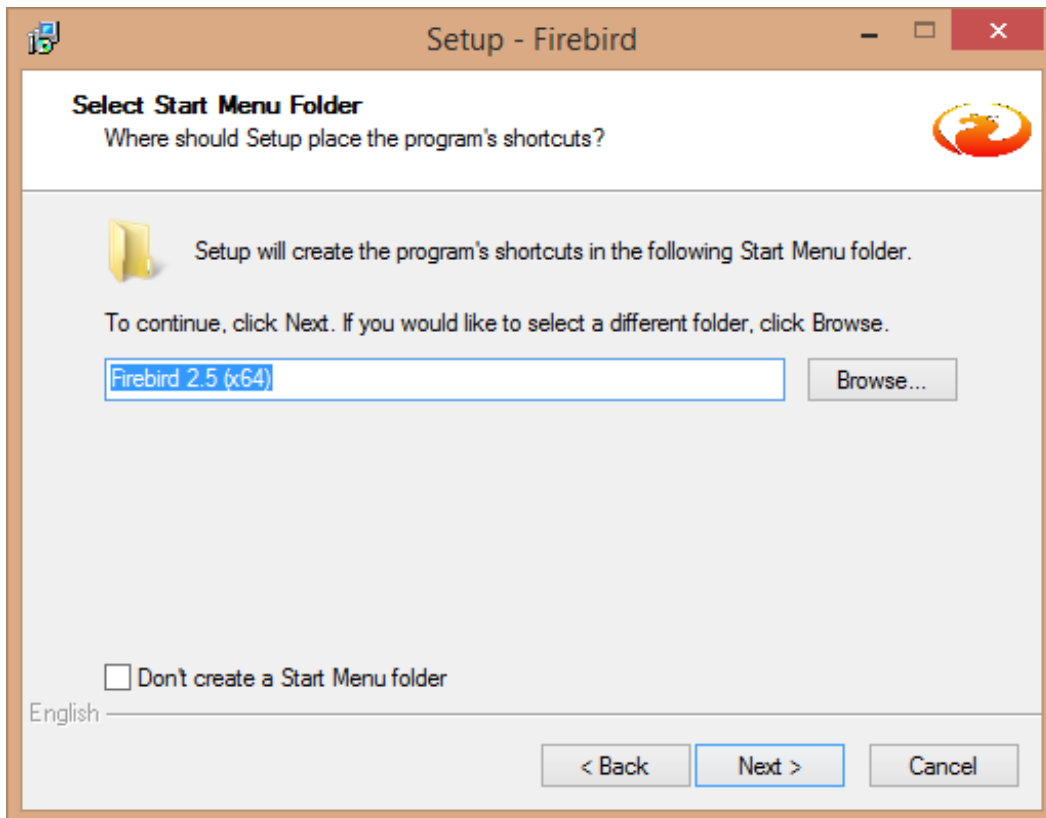


17. The Select Components screen is displayed. Select the **Classic Server binary** radio button and click the **Next** button.



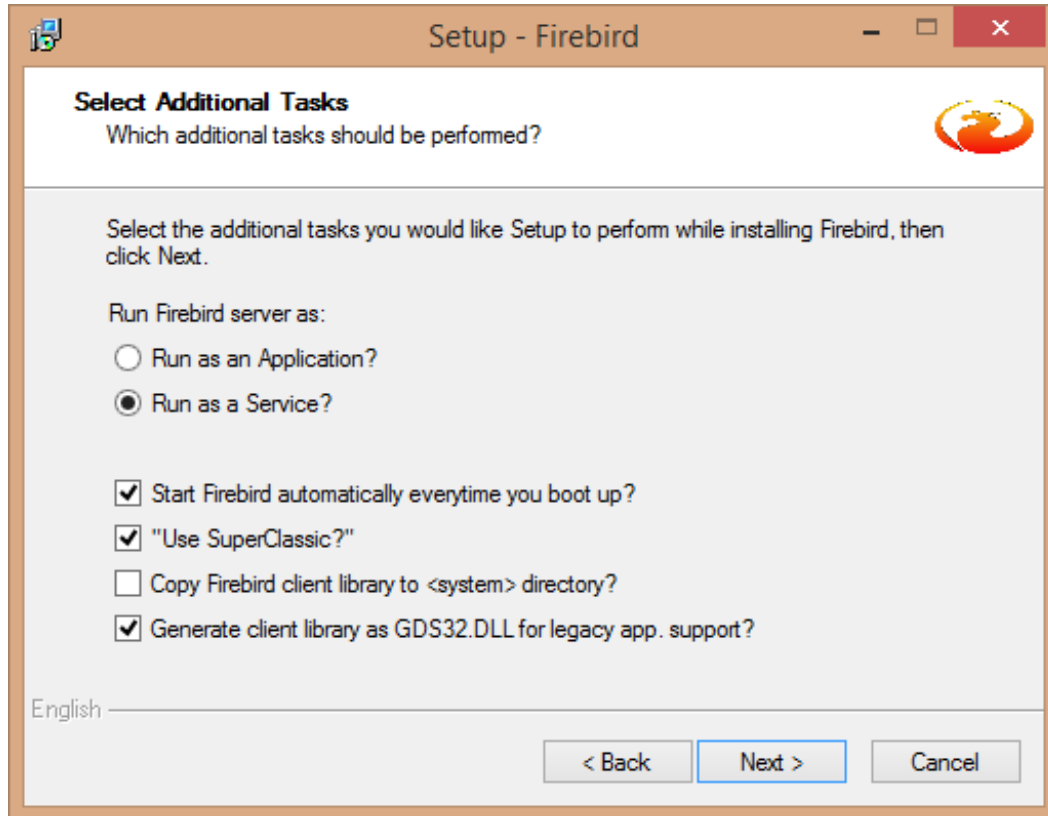


18. The Select Start menu folder is displayed. Click the **Next** button.

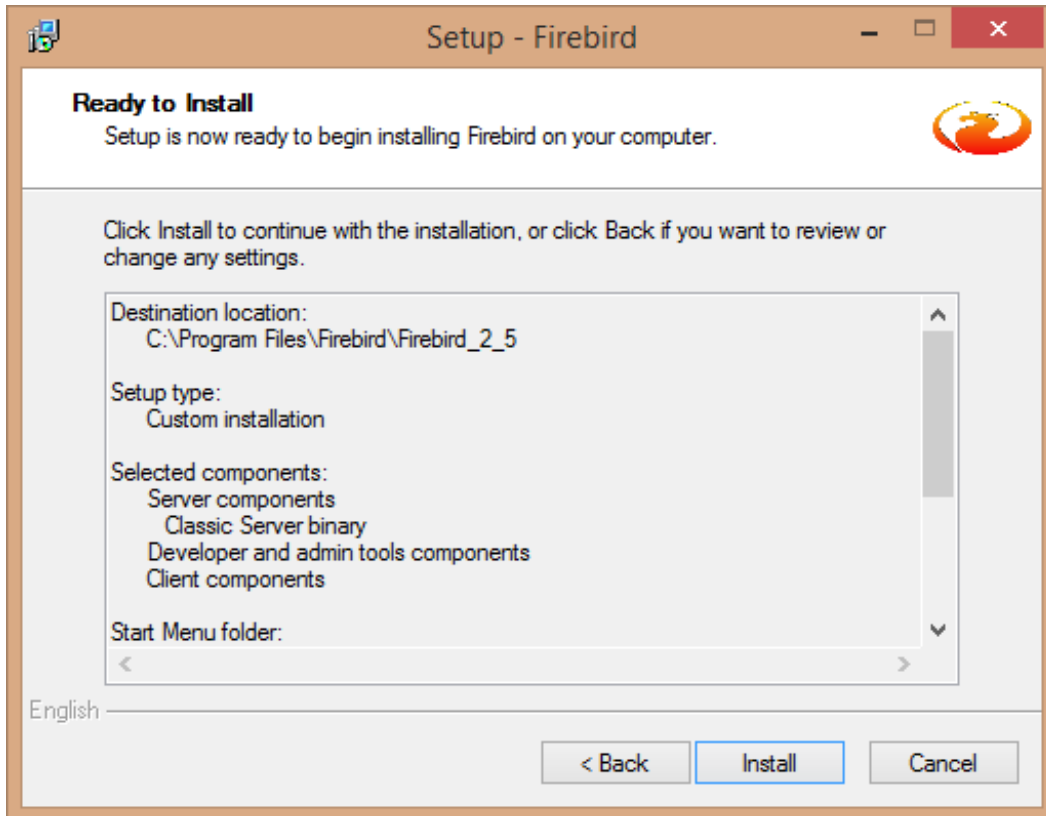


19. The Select Additional Tasks window is displayed. Select the following:

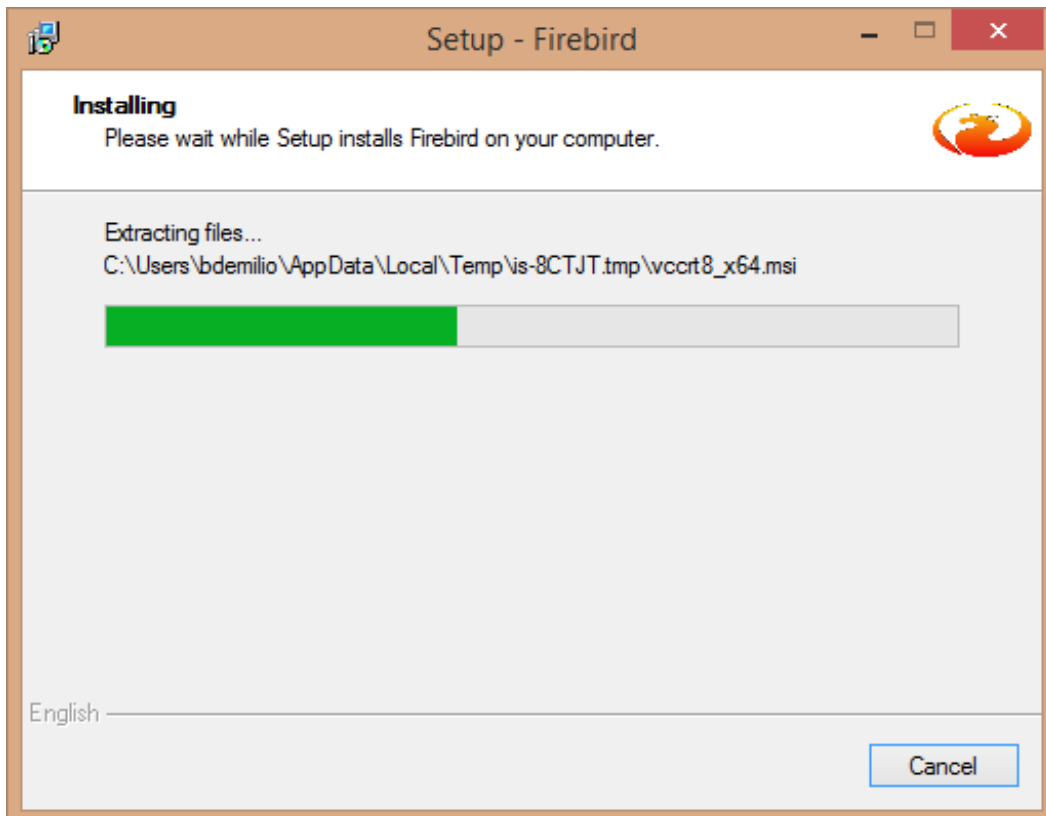
- Select the **Run as a Service** radio button.
- Select the **Start Firebird automatically everytime you boot up** checkbox.
- Select the **Use Super Classic** checkbox
- Select **Generate client library as GDS32.DLL for legacy app. support**checkbox



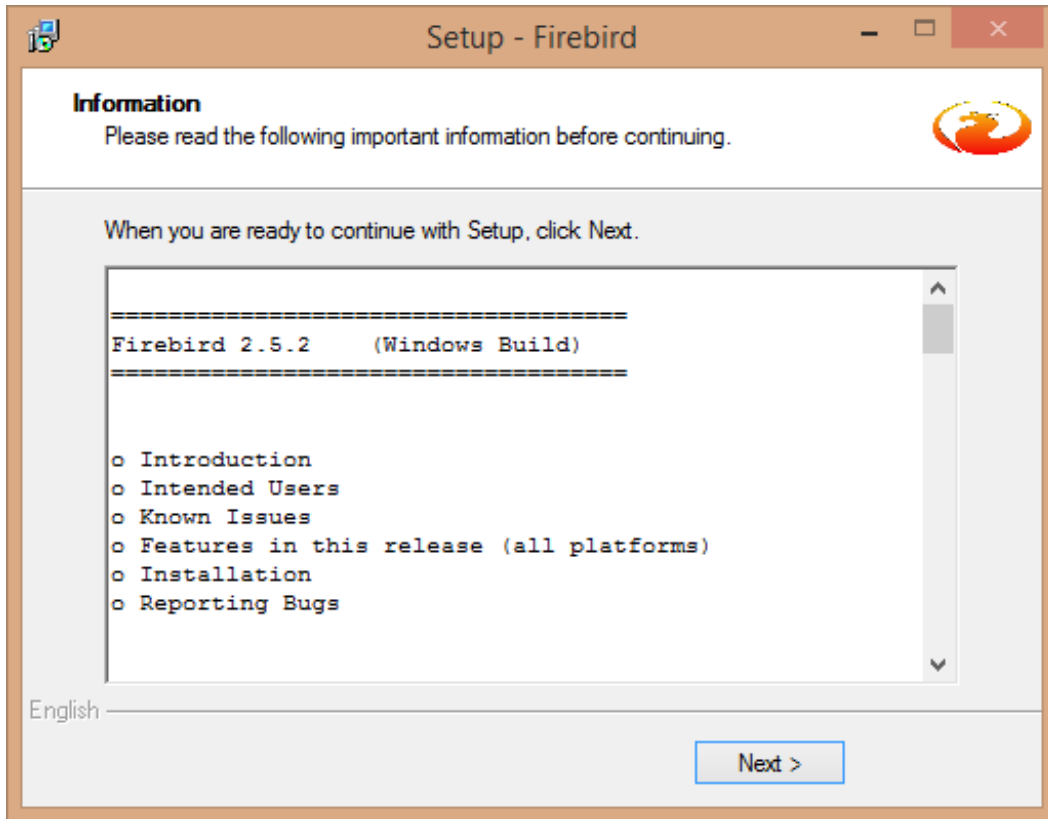
20. The Ready to Install window is displayed. Click the **Install** button to begin installing the installation.



21. Firebird is installed on your system. Wait for the Installation to complete.



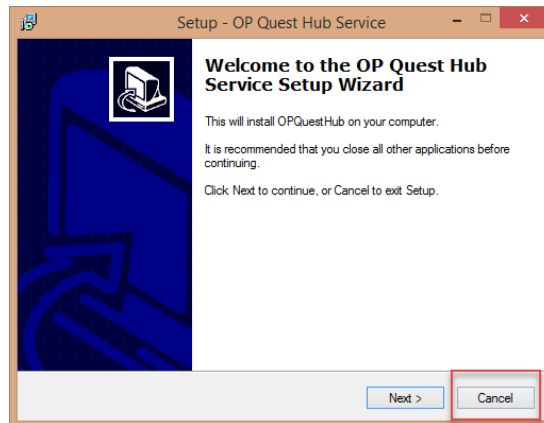
22. Click the **Next** button to continue the installation.



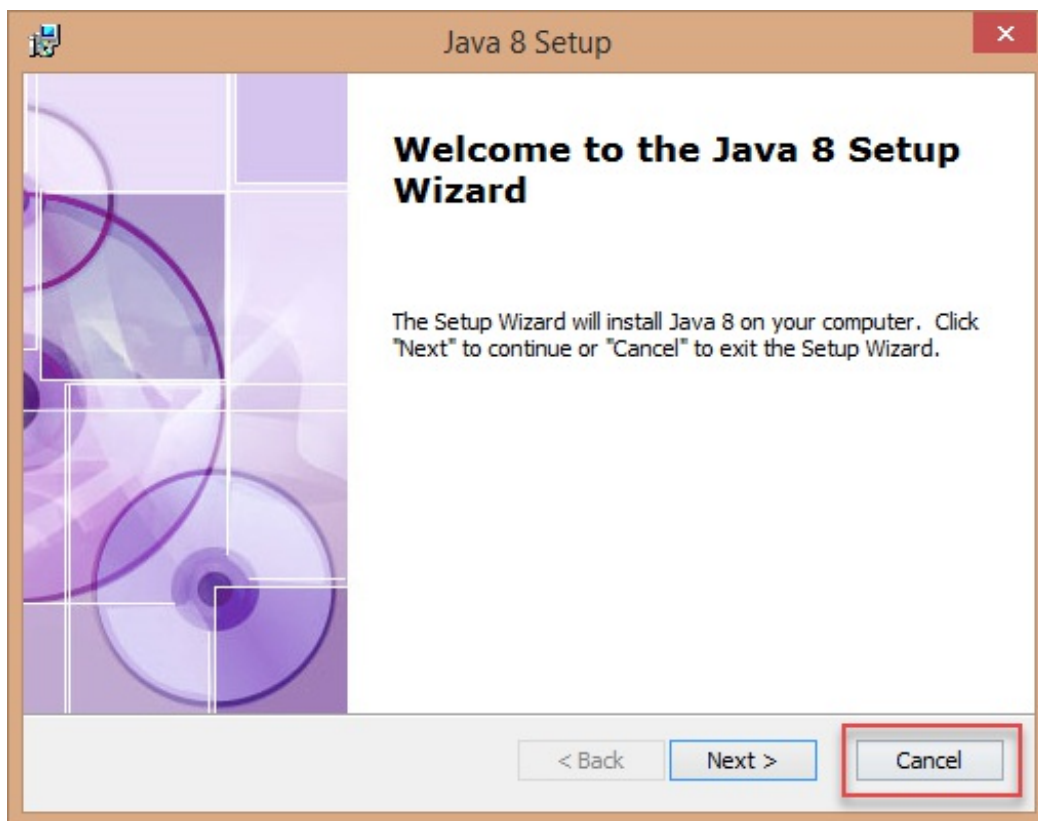
23. The Completing the Firebird Setup Wizard is displayed. Deselect the **After installation - What Next** checkbox and click the **Finish** button.



24. The OP Quest Hub Service Setup Wizard is displayed. This part of the installation is no longer necessary. Click the **Cancel** button.



25. The Java 8 Setup Wizard is displayed. This is an older version of Java. Click the **Cancel** button to continue.



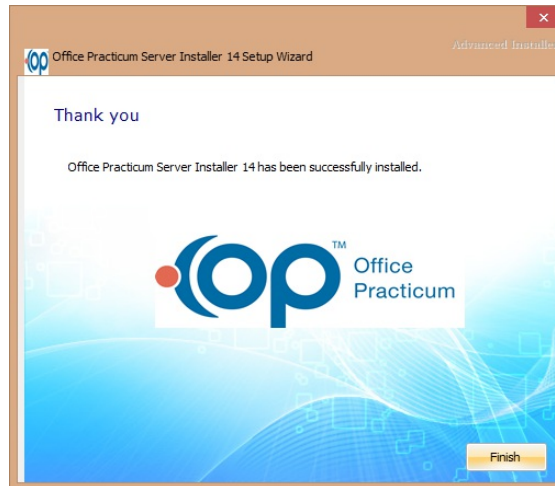
26. When you click the Cancel button, a window is displayed indicating the Java 8 Setup Wizard was interrupted. Click the **Finish** button to continue.



27. The OP Exchange Network Setup Wizard is displayed. Click the **Cancel** button to continue.

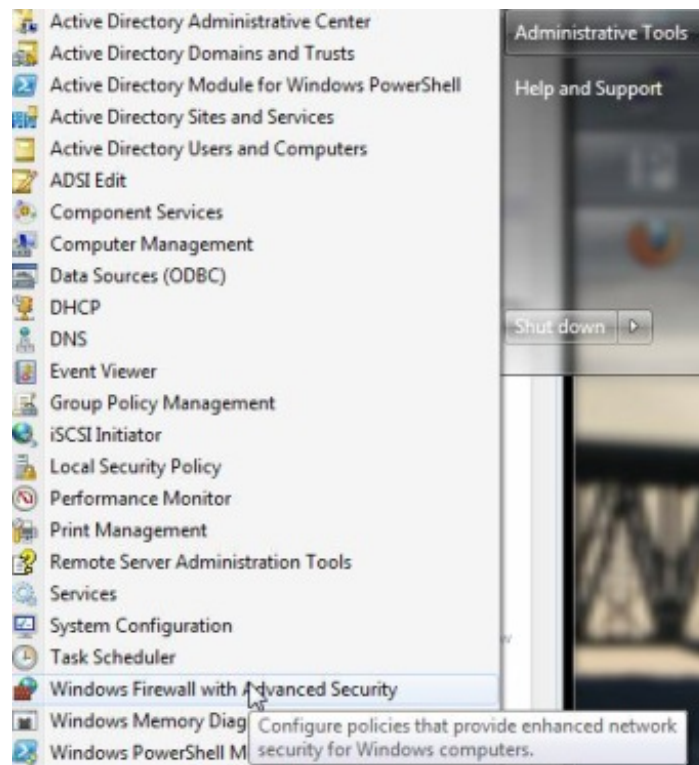


28. The Office Practicum Server Installer is complete. Click the **Finish** button.

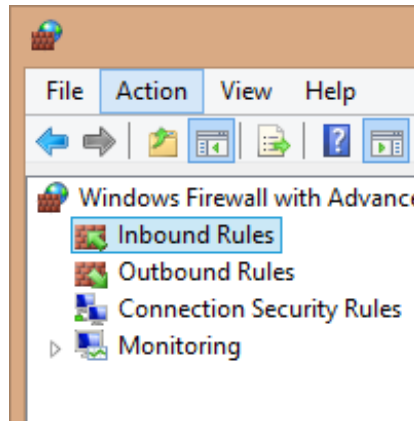


## Post Install Server-Side Procedures (Adding Firewall Rule for OP Traffic)

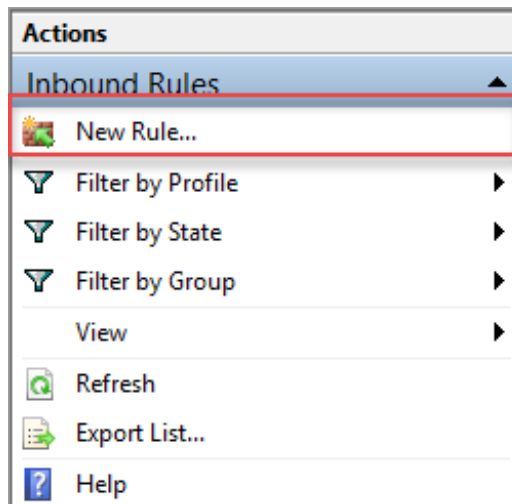
1. Add Windows Firewall rules to allow incoming and outgoing Office Practicum traffic. Ports TCP 3050 incoming and UDP 3060 outgoing need to be opened locally on the server.



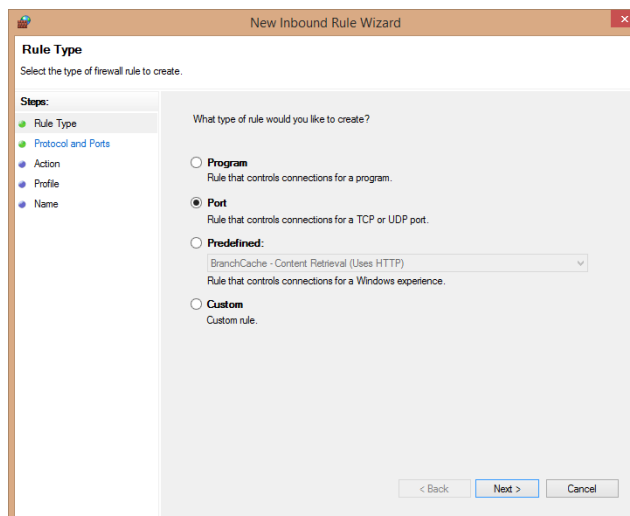
2. Click the Windows Logo on the task bar and select **Administrative Tools > Windows Firewall with Advanced Security** to launch the firewall application. The Windows Firewall with Advanced Security window is displayed.
3. In the left pane, click **Inbound Rules**.



4. In the Actions pane (right pane) click **New Rule** to begin adding a new inbound firewall rule. The New Inbound Rule Wizard is displayed.



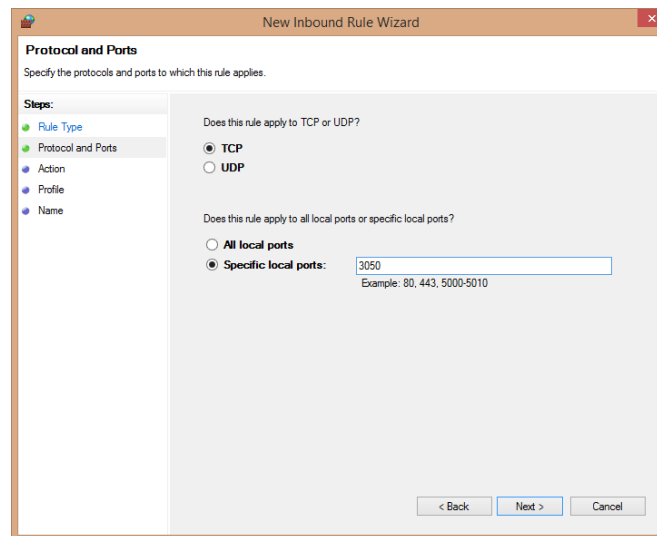
5. The Rule Type window step prompts you to select the type of rule that you want to create. Select the **Port** radio button. Then, click the **Next** button to continue.



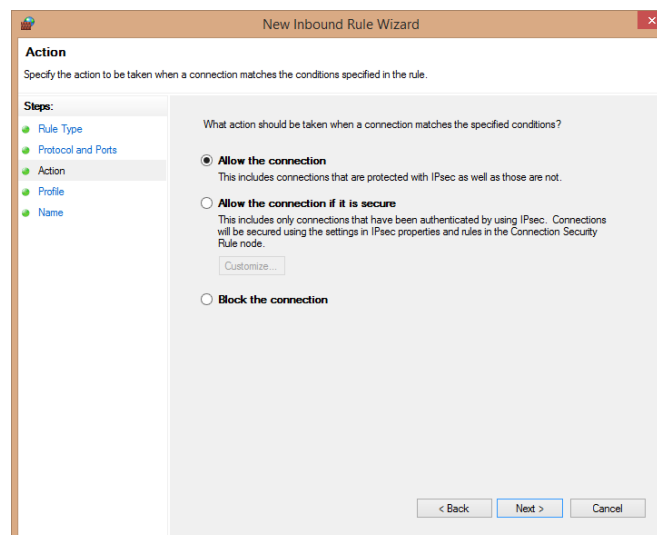
6. The Protocol and Ports window is displayed. Ensure the **TCP** radio button is selected. Then,



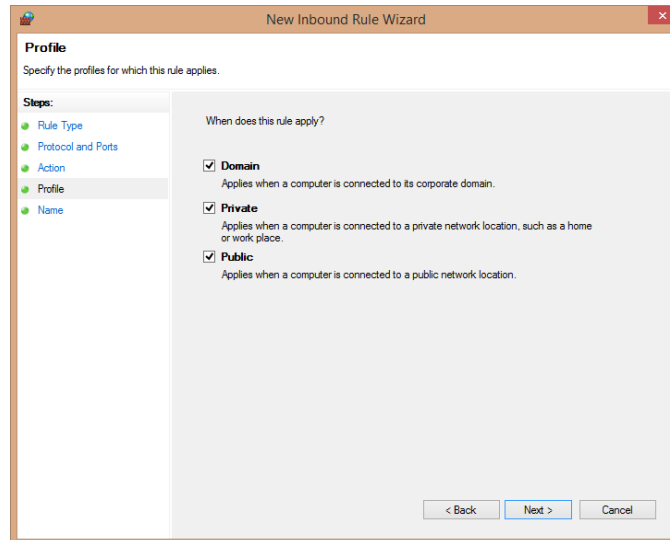
enter **3050** into the Specified local ports field. Click the **Next** button to continue.



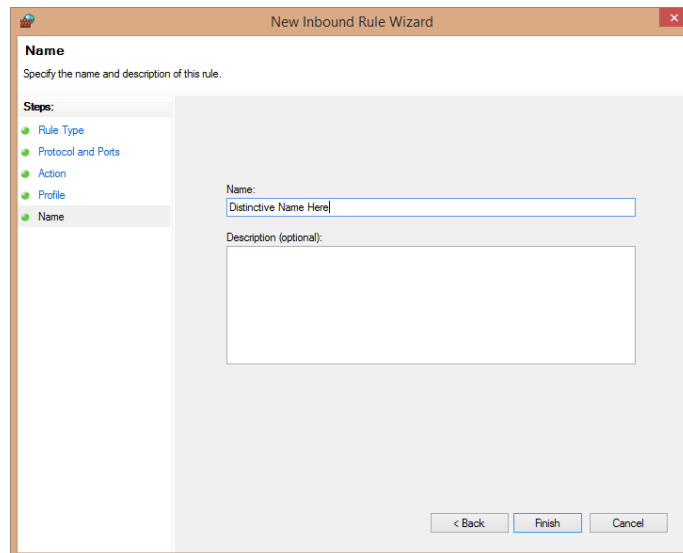
7. The Action window is displayed. Ensure the **Allow the connection** is selected and click the **Next** button to continue with rule creation.



8. The Profile windows is displayed. Keep all the default checkboxes selected and click the **Next** button to continue with rule creation.



9. The Name window is displayed. Give the rule an easily identifiable name. Then, click the **Finish** button to add the rule to the firewall.



10. Repeat steps 1-9 to add a **UDP** rule for port **3060** on the **outbound** side of the Windows Firewall.