

Important Content Update Message

We are currently updating the OP Help Center content for OP 20. We appreciate your patience as we continue to make these updates. To locate the version of your software, navigate to: **Help tab > About**

Installation on Mac OSX

Last Modified on 02/15/2021 9:14 am EST



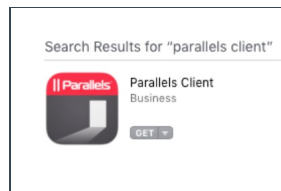
Note: This documentation applies to the OP Cloud environment.

To install Office Practicum on a Mac OSX:

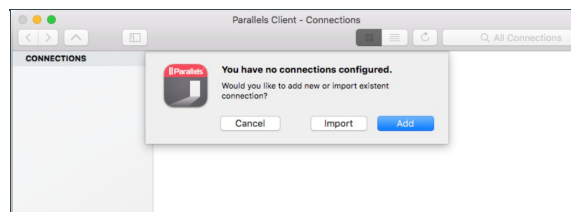


Important: Verify you are currently running an Apple-supported version of Mac OSX before proceeding.

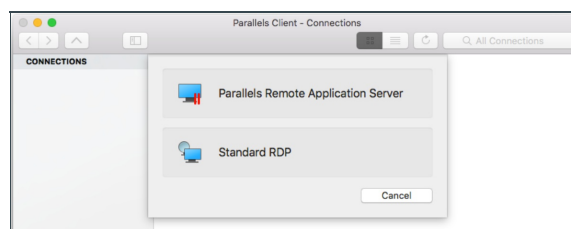
1. Download the app Parallels Client from the App Store. It is a free application and can be found by opening the App Store and typing "Parallels Client" into the search engine.



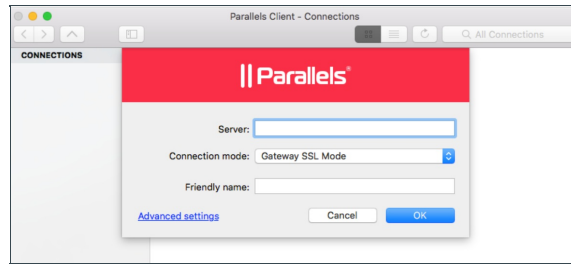
2. Open the Parallels Client application.
3. The Parallels Client will display a message informing that you have no connections configured. Click **Add** to configure a new connection.



4. Select the option for Parallels Application Server.

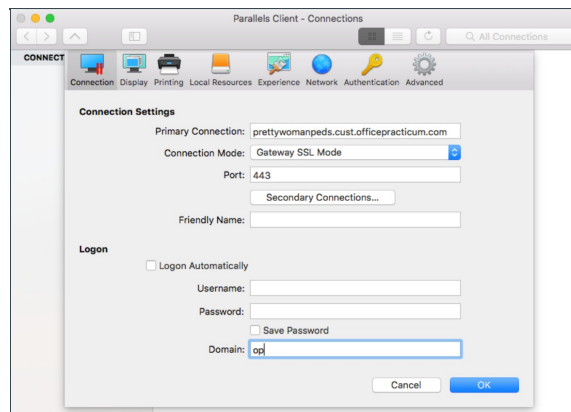


5. Select **Advanced settings**.



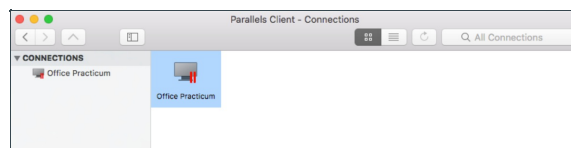
6. On the Connection tab, fill in the required fields with the following information:

- a. **Primary Connection:** *yourpracticename.cust.officepracticum.com*.
- b. **Mode:** Gateway SSL Mode.
- c. **Port:** 443.
- d. **Friendly Name:** OP Cloud.
- e. **Logon Automatically:** deselect the checkbox.
- f. **Username** and **Password** are supplied by Office Practicum and are unique to each device (example: 1234_0001234).
- g. **Save Password:** select the checkbox.
- h. **Domain:** OP.



7. Click the **OK** button once the information is entered.

8. An Office Practicum icon is displayed. Double-click the icon to authenticate and gain access to your Office Practicum instance.



9. Double-click the **OP** icon to launch Office Practicum.

