

# Customize CDA

Last Modified on 09/22/2021 3:38 pm EDT

Version 14.19

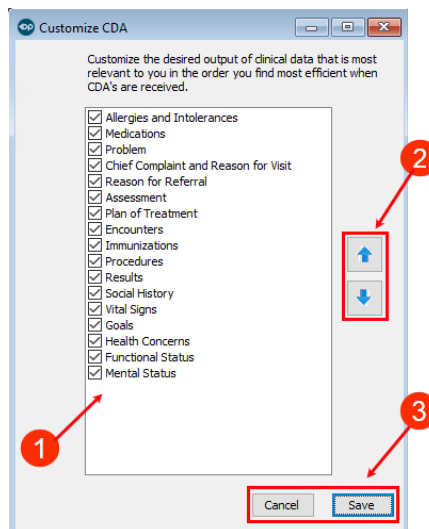


This window map article points out some of the important aspects of the window you're working with in OP but is not intended to be instructional. To learn about topics related to using this window, see the **Related Articles** section at the bottom of this page.

## About Customize CDA

**Path: Clinical tab > More button (in Reference Date group) > Customize CDA button**

The Customize CDA window is where users can customize the output of clinical data and the order in which that data is presented in a CDA file.



## Customize CDA Map

Number	Section	Description
1	CDA Sections	The available sections that can be included in the CDA file are listed with a corresponding checkbox. The checkbox is selected to include or deselected to exclude each section of the CDA.
2	Move Arrows	The up and down arrows are used to reorder the sections that are displayed in a CDA.
3	Function buttons	<ul style="list-style-type: none"> <li>• <b>Cancel:</b> Closes the Customize CDA window without saving any changes that were made.</li> <li>• <b>Save:</b> Saves the changes that were made and closes the window.</li> </ul>